

Archilife

URBAN STYLE

Ideas and trends in landscaping, 2025.

CITY DESIGN

Relevant solutions for modern landscaping.
Aesthetics and functionality in detail.

ARCHITECTURE OF COZINESS

Solutions that change the urban environment.

C O M F O R T A B L E
ENVIRONMENT



NOW WITH
VIRTUAL
3D MODELS

Simply scan the QR code next to the product

Archilife

By



Dear Friends,

We present to you a catalog dedicated to modern urban landscaping using products made from composite marble stone. A decade of experience has enabled us to create reliable solutions suited for a wide variety of projects.

Our commitment to quality—ensuring that our products last for decades—and the continuous efforts of our experienced team of architects, designers, and engineers, along with the competencies accumulated over the years, allow us to develop small architectural forms made from composite marble with extended durability while maintaining their functionality and ease of use.

Modern design and long-lasting materials are the hallmark of Archilife.

In this catalog, you'll find information on our latest design solutions offered to both public and private clients across Saudi Arabia: local authorities, developers, urban planners, architectural firms, shopping centers, hotel chains, city parks, and many others.

Archilife is not just a manufacturer of standard products, but a partner for each client, ready to offer optimal, custom-tailored solutions to create a comfortable urban environment.

Our goal is to furnish public spaces with modern solutions that improve people's quality of life and enhance the attractiveness of Saudi Arabia's cities for years to come.

Sincerely,

CEO
Wael Alasbali

MATERIALS

COMPOSITE MARBLE \ KM



Advantages:

- High strength
- Durability
- Wear resistance
- Environmental friendliness
- Natural texture
- Urban aesthetics

Properties:

- Brand – M600
- Compressive strength – B45
- Density – 3 t/m³
- Frost resistance – F400
- Water resistance – W200
- Abrasion resistance – 0.5 g/cm²

WOOD-POLYMER COMPOSITE \ WPC



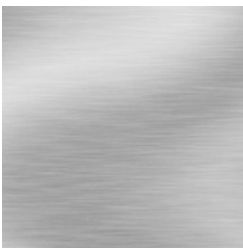
Advantages:

- Wide range of colors (RAL) and textures
- Moisture-resistant and fire-resistant
- Does not shrink or swell
- Not affected by pests and microorganisms

Properties:

- Density: 660 kg/m³
- Humidity: 5-10%
- Temperature range: -50°C to +50°C
- Long service life – from 15 years

GALVANIZED STEEL \ OS



Advantages:

- Resistant to environmental effects
- Long service life
- Corrosion and chemical resistance

Properties:

- Corrosion resistance
- Strength
- Wear resistance
- Durability

POWDER COATED METAL \ MPP



Advantages:

- Corrosion protection
- Durable protective coating
- Temperature fluctuation resistance
- Low fading in sunlight
- Resistance to mechanical impacts and scratches

Properties:

- Corrosion resistance
- Temperature range: -60°C to +80°C
- Durability: 15-20 years
- Environmentally friendly

Archilife is a Saudi manufacturer of outdoor furniture made from durable materials.

We increase the investment attractiveness of regions with modern architectural solutions “made in Saudi” from high-strength composite marble stone, making the lives of city residents more comfortable and cities more beautiful for decades.

- Architects
- Designers
- Engineers
- Constructors
- Sculptors
- Manufacturers

50+

Professionals

Own production base

Consisting of several departments:

5000 M²

Total area under construction

Development

Design creation, 3D modeling and drawings

Modeling

Development of templates and forms according to drawings

Production

The production line is equipped with modern equipment

Service

Full range of services for servicing small architectural forms (delivery, installation, repair)



Concepts of improvement

Ready-made solutions for improvement of cities

Parks and Gardens:

- Community parks
- Botanical gardens
- Nature reserves
- Urban green spaces

City Squares and Plazas:

- Town squares
- Public plazas
- Pedestrian zones
- Market squares

Streets and Sidewalks:

- Main streets
- Boulevards
- Pedestrian walkways
- Promenades

Transportation Hubs:

- Bus stops and shelters
- Train and subway stations
- Airport terminals
- Ferry docks

Recreational Areas:

- Sports fields and courts
- Playgrounds
- Beaches and waterfronts
- Skate parks

Tourist Attractions:

- Historical sites
- Monuments and memorials
- Tourist information centers
- Scenic viewpoints

Civic and Cultural Spaces:

- City halls and government buildings
- Libraries
- Museums and galleries
- Cultural centers

Educational Institutions:

- School campuses
- University grounds
- Public lecture spaces
- Community centers

Healthcare Facilities:

- Hospitals
- Clinics
- Health centers
- Rehabilitation centers

Commercial Areas:

- Shopping districts
- Outdoor malls
- Farmers' markets
- Business districts

Residential Zones:

- Public housing areas
- Gated communities
- Apartment complexes
- Senior living facilities

Event Spaces:

- Open-air theaters
- Concert venues
- Festival grounds
- Exhibition centers

Materials

Base - composite marble stone. Flooring - wood-polymer composite. Covered with a protective layer.

Mounting method

Installed on a pre-prepared base

Decorative solutions

Base color: white, gray, dark gray, orange and red. WPC color according to RAL Classic catalog.



Collection "Origami"



Origami Two Bench
1900 x 500 x 900mm
Weight: 260kg
Art: 1010102



Origami One Bench
1920 x 565 x 450mm
Weight: 225kg
Art: 1010101



Bollard Dual
330 x 300 x
600mm
Weight: 70kg
Art: 10402



Tree trunk grate Pyramid
One 1500 x 1500 x 60mm
Weight: 205kg
Art: 1060101



Artemida
flowerpot 1800 x
500 x 450mm
Weight: 350kg
Art: 1030101



Fountain Poly
750 x 365 x
1190mm
Weight: 232kg
Art: 10503



Table August
2050 x 900 x 750mm
Weight: 675kg
Art: 10801



Urn Artem 400 x
400 x 750mm
Weight: 115kg
Art: 10201



Concept of square improvement



About the collection

Modern street furniture with clean lines and geometric shapes. Includes benches, tables, planters and a fountain, creating a stylish and functional space. Durable materials and minimalist design harmoniously complement the urban landscape. . Ideal for parks, squares and courtyards.

Collection "Origami"

Collection "Origami"



© All rights reserved

Materials

Base - composite marble stone. Flooring - wood-polymer composite. Covered with a protective layer.

Mounting method

Installed on a pre-prepared base

Decorative solutions

Base color: white, gray, dark gray, orange and red. WPC color according to RAL Classic catalog.



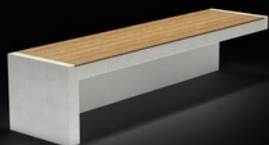
Concept of square improvement

About the collection

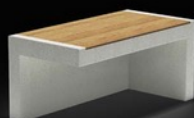
Modern benches with built-in lighting that create coziness and style in the urban environment. Durable materials, minimalist design and soft glow make them ideal for parks, squares and embankments. Lighting not only emphasizes architectural forms but also increases safety in the evening. The collection harmoniously complements urban spaces, combining aesthetics and functionality.

Collection "Glow"

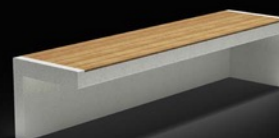
Collection "Glow"



Bench Glow 1
2000 x 500 x 460mm
Weight: 380kg
Art: 2034301



Bench Glow 2
1000 x 500 x 460mm
Weight: 207kg
Art: 2034302



Bench Glow 3
2000 x 500 x 460mm
Weight: 380kg
Art: 2034303



© All rights reserved

Materials

Base - composite marble stone. Flooring - wood-polymer composite. Covered with a protective layer.

Mounting method

Installed on a pre-prepared base

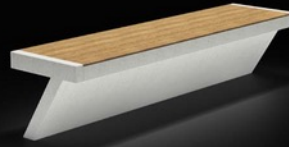
Decorative solutions

Base color: white, gray, dark gray, orange and red. WPC color according to RAL Classic catalog.



Collection "Glow"

Collection "Glow"



Bench Glow 4
1000 x 500 x 460mm
Weight: 207kg
Art: 2034304



Bench Glow 5
2000 x 500 x 460mm
Weight: 377kg
Art: 2034305



Glow flowerpot
600 x 600 x 600mm
Weight: 165kg
Art: 2034306



© All rights reserved

Embankment improvement concept

About the collection

A modern solution for comfortable relaxation by the water. Benches with an ergonomic design, comfortable backs and stylish finish fit organically into the space. Urns and landscaping complement the composition, creating a cozy atmosphere. The materials are resistant to moisture and temperature changes, ensuring durability and comfort.

Collection "Breeze"

Set 'Breeze'



© All rights reserved

Materials

Base - composite marble stone. Flooring - wood-polymer composite. Covered with a protective layer.

Mounting method

Installed on a pre-prepared base

Decorative solutions

Base color: white, gray, dark gray, orange and red. WPC color according to RAL Classic catalog.



Collection 'Breeze'

Set 'Breeze'



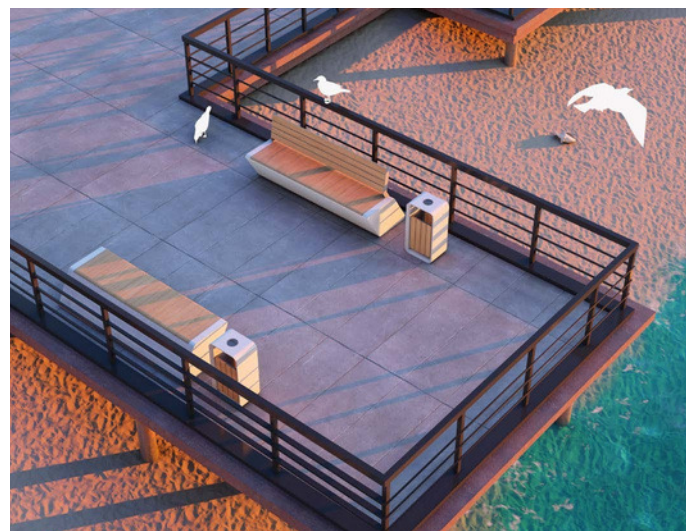
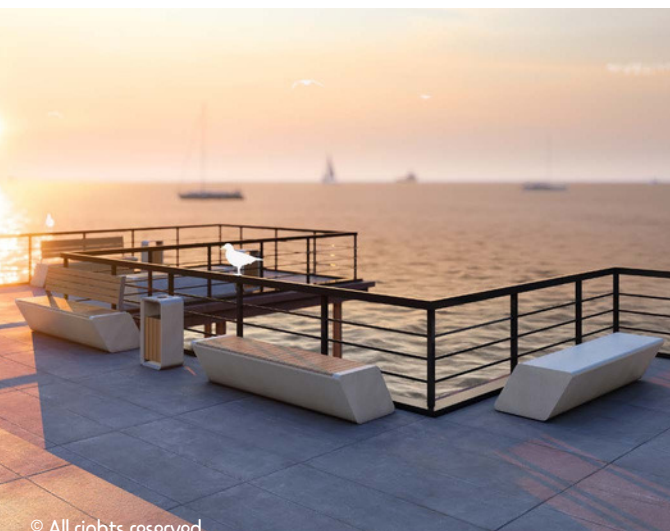
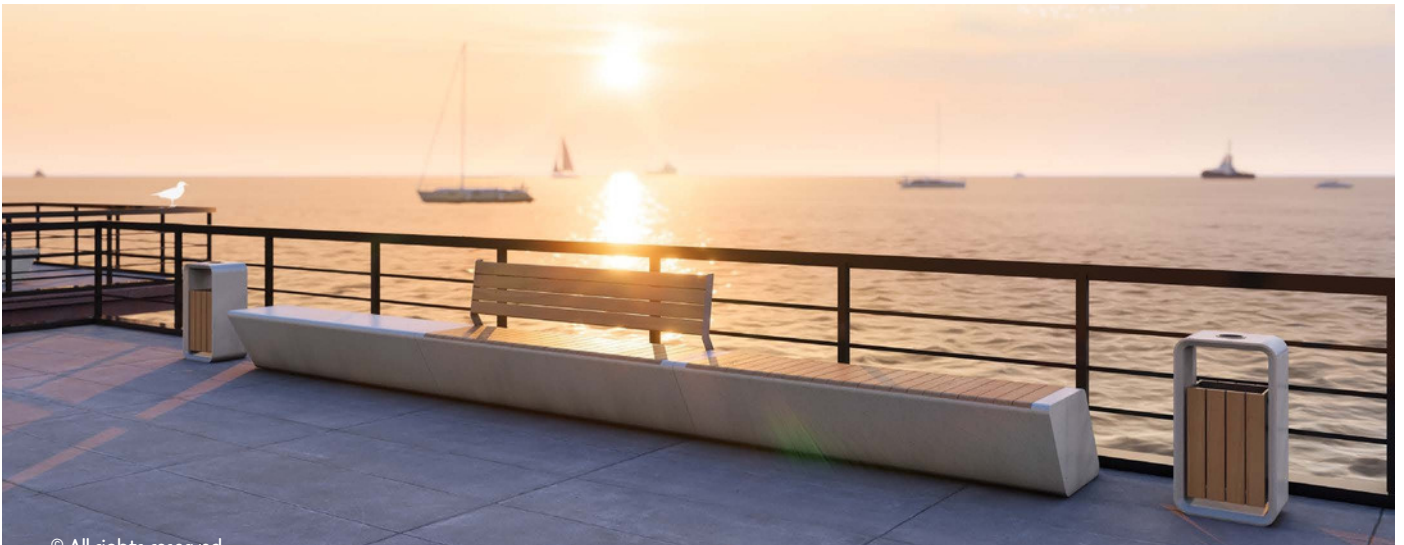
Breeze Two Bench
2000 x 735 x 880 mm
Weight: 335 kg
Art: 2058802



Breeze One Bench
2000 x 735 x 450 mm
Weight: 335 kg
Art: 2058801



Breeze Bench
2000 x 735 x 450 mm
Weight: 432 kg
Art: 2058803



Concept of Square Improvement

About the Collection

A modern series of street furniture with a minimalist design and ergonomic shapes. It includes benches, tables, planters, and stands, harmoniously fitting into the urban environment. Durable materials and protective coatings ensure longevity and resistance to external conditions.

Collection 'Modern'

Set 'Modern'



Materials

Base - composite marble stone.
Decking - wood-polymer composite.
Covered with a protective layer.

Mounting Method

Installed on a pre-prepared base.

Decorative Solutions

The base color is white, gray, dark gray, orange, and red. The color of the wood-polymer composite (WPC) is according to the RAL Classic catalog.



Modern One 3m Bench
3000 x 500 x 450 mm
Weight: 582 kg
Art: 204900101



Modern Two 2m Bench
2000 x 500 x 845 mm
Weight: 402 kg
Art: 204900202



Modern With Table 2m Bench
2000 x 500 x 845 mm
Weight: 402 kg
Art: 204900402



Materials

Base - composite marble stone.
Decking - wood-polymer composite.
Covered with a protective layer.

Mounting Method

Installed on a pre-prepared base.

Decorative Solutions

The base color is white, gray, dark gray, orange, and red. The color of the wood-polymer composite (WPC) is according to the RAL Classic catalog.



Modern 4 Bench
2000 x 500 x 450 mm
Weight: 402 kg
Art: 204900302



Modern Radial 2 Bench
2094 x 500 x 450 mm
Weight: 372 kg
Art: 204900501



Modern Radial 1 Bench
2094 x 500 x 450 mm
Weight: 372 kg
Art: 204900502



Modern With Lounger Bench
3000 x 1340 x 1050 mm
Weight: 582 kg
Art: 2049006



Modern Stella
500 x 100 x 1900 mm
Weight: 237 kg
Art: 2049011



Modern Table
2200 x 800 x 750 mm
Weight: 427 kg
Art: 2049007



Modern One 1m Bench
1000 x 500 x 450 mm
Weight: 222 kg
Art: 204900103



Modern One 500 Bench
500 x 500 x 450 mm
Weight: 132 kg
Art: 204900104



Modern Bollard
600 x 600 x 450 mm
Weight: 250 kg
Art: 2049010



Modern Trash Bin
400 x 400 x 600 mm
Weight: 125 kg
Art: 204900801



Modern XL Planter
700 x 700 x 700 mm
Weight: 310 kg
Art: 204900902



Modern L Planter
500 x 500 x 500 mm
Weight: 147 kg
Art: 204900901



Concept of Public Space 'Amphitheater'

Space for relaxation and meetings

About the Collection

A modern relaxation area with multi-level benches and a canopy provides a comfortable space for communication, events, and relaxation. The modular design allows the area to be adapted for various usage scenarios. Durable materials and minimalist design harmoniously blend into the urban environment and natural landscape.



Materials

Base - composite marble stone.
Decking - wood-polymer composite.
Covered with a protective layer.

Mounting Method

Installed on a pre-prepared base.

Decorative Solutions

The base color options are white, gray, dark gray, orange, and red. The color of the wood-polymer composite (WPC) is available according to the RAL Classic catalog.



Concept of Urban Square Development

About the Collection

The Cruiser set with a shadow canopy offers comfort and aesthetics for cities. They create cozy shaded areas in parks and other public spaces, allowing people to enjoy rest, reading, or picnics without overheating or sunburn. These canopies also enhance the urban environment by adding design and architectural elements.

(Cruiser) Set

Cruiser Set



© All rights reserved

Concept of Square Improvement

Materials

Base - composite marble stone.
 Decking - wood-polymer composite.
 Steel - powder coating.

Mounting Method

Installed on a pre-prepared base.

Decorative Solutions

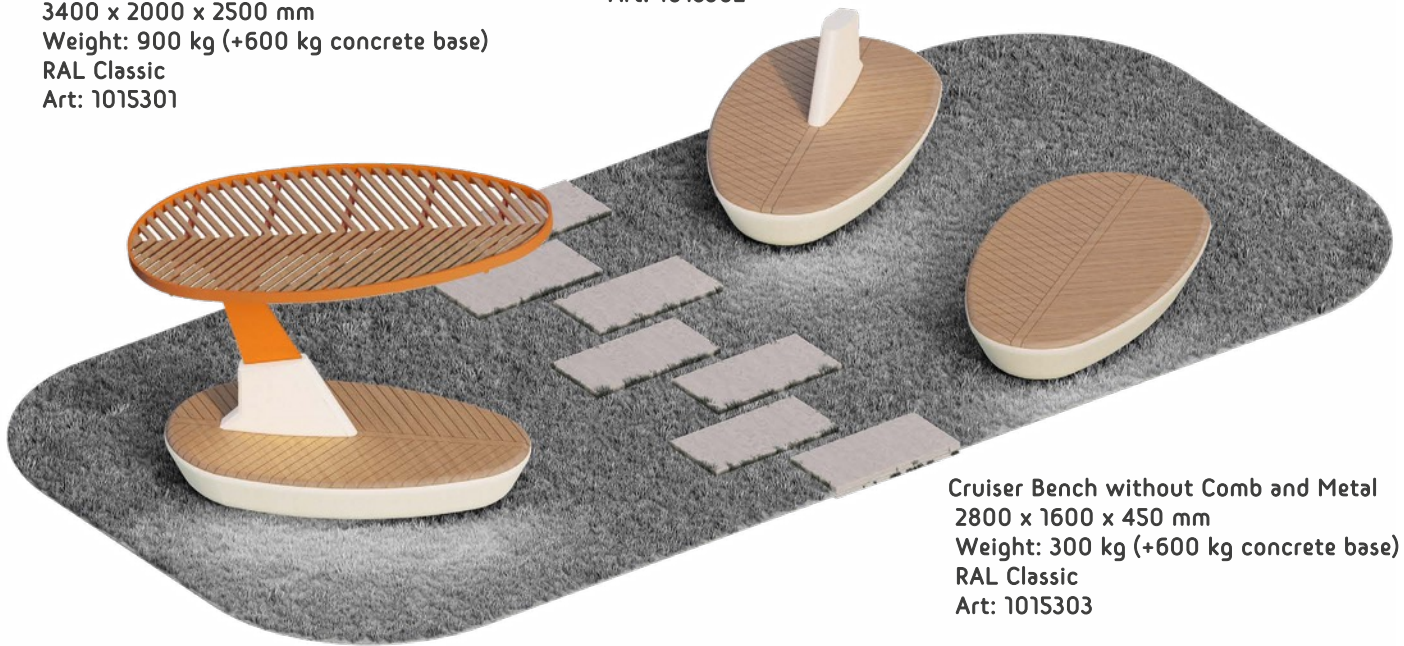
The base color options are white, gray, dark gray, orange, and red. The color of the wood-polymer composite (WPC) is available according to the RAL Classic catalog.



Cruiser Set (Cruiser Set)

Cruiser Shade Canopy
 3400 x 2000 x 2500 mm
 Weight: 900 kg (+600 kg concrete base)
 RAL Classic
 Art: 1015301

Cruiser Bench with Comb
 2800 x 1600 x 1000 mm
 Weight: 600 kg (+600 kg concrete base)
 RAL Classic
 Art: 1015302



Cruiser Bench without Comb and Metal
 2800 x 1600 x 450 mm
 Weight: 300 kg (+600 kg concrete base)
 RAL Classic
 Art: 1015303

Cruiser Set (Cruiser Set)



Cruiser Shade Canopy
 3400 x 2000 x 2500 mm
 Weight: 900 kg (+600 kg concrete base)
 RAL Classic
 Art: 1015301



Cruiser Shade Canopy
 3400 x 2000 x 2500 mm
 Weight: 900 kg (+600 kg concrete base)
 RAL Classic
 Art: 1015301



Cruiser Shade Canopy
 3400 x 2000 x 2500 mm
 Weight: 900 kg (+600 kg concrete base)
 RAL Classic
 Art: 1015301



Concept of Square Improvement

Collection "Ar Nuvo"

About the Collection

Ar Nuvo is a collection of street furniture with refined shapes and original designs. The products in this collection are characterized by solutions that combine classic elements with modern design.



Materials

Base - composite marble stone.
Decking - wood-polymer composite.
Covered with a protective layer.

Mounting Method

Installed on a pre-prepared foundation.

Decorative Solutions

Base color: white, gray, dark gray, orange, and red.
Wood-polymer composite color: according to the RAL Classic catalog.



Ar-Nuvo Two Bench
1800 x 450 x 750 mm
Weight: 97 kg
Art: 202380401



Ar-Nuvo One Bench
1800 x 450 x 450 mm
Weight: 62 kg
Art: 202380402



Materials

Base - composite marble stone.
Decking - wood-polymer composite.
Covered with a protective layer.

Mounting Method

Installed on a pre-prepared base.

Decorative Solutions

Base color options: white, gray, dark gray, orange, and red. The color of the wood-polymer composite (WPC) is available according to the RAL Classic catalog.



Collection "Ar Nuvo"

Collection "Ar Nuvo"



Ar-Nuvo Chaise Lounge
2400 x 2400 x 1200 mm
Weight: 66 kg
Art: 2023806



Ar-Nuvo Table
2000 x 750 x 800 mm
Weight: 106 kg
Art: 2023801



Ar-Nuvo XXXL Planter
1700 x 1700 x 750 mm
Weight: 596 kg
Art: 202380301



Ar-Nuvo XXL Planter
1600 x 1600 x 700 mm
Weight: 537 kg
Art: 202380302



Ar-Nuvo XL Planter
1200 x 1200 x 650 mm
Weight: 330 kg
Art: 202380303



Ar-Nuvo L Planter
900 x 900 x 600 mm
Weight: 5202 kg
Art: 202380304



Ar-Nuvo Tree Grate
1200 x 1200 x 450 mm
Art: 10603



Corã Bin
400 x 300 x 700 mm
Weight: 51 kg
Art: 10210



Ar-Nuvo Drinking Fountain
440 x 440 x 1000 mm
Weight: 70 kg
Art: 10505



Urban improvement concept.

Materials

Base – composite marble stone.
Decking – wood-polymer composite.
Coated with a protective layer.

Mounting Method

Installed on a pre-prepared foundation.

Decorative Solutions

Base color: white, gray, dark gray, orange, and red. Wood-polymer composite color: according to the RAL Classic catalog.

Bench "Sputnik"



Bench Sputnik
3110 x 2990 x 460 mm
Art: 20190



Bench Sputnik
3110 x 2990 x 460 mm
Art: 20190



Urban improvement concept.

Bench "Buono"

About the bench

The circular bench, combined with a planter, creates a cozy space around trees. The ergonomic design and durable materials ensure comfort and longevity. It is ideal for parks, squares, and public areas.



Materials

Base: Composite marble stone.

Decking: Wood-polymer composite.

Coated with a protective layer.

Mounting method

Installed on a pre-prepared foundation.

Decorative solutions

The base color options are white, gray, dark gray, orange, and red. The color of the wood-polymer composite (WPC) is available according to the RAL Classic catalog.



The bench "Buono":

Size: 3010 x 3010 x 450 mm

Art: 1011802



Concept of Quadratic Enhancement

Modular benches "Delta"

Regarding the collection

The modules can be reconfigured, enhanced with planters, and utilized to construct structures of any size and shape. The meticulously designed components, considering functionality, will enable the sets to integrate seamlessly into urban architecture.



Materials

The base is composite-marble stone.
The flooring is a wood-polymer composite.
Covered with a protective layer.

Mounting method

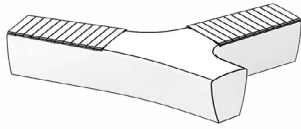
It is installed on a
pre-prepared base

Decorative solutions

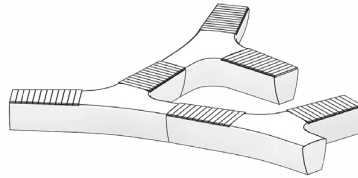
The base color is white, gray, dark gray,
orange and red. WPC color according
to the RAL Classic catalog.



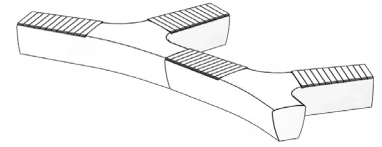
Modular benches «Delta»



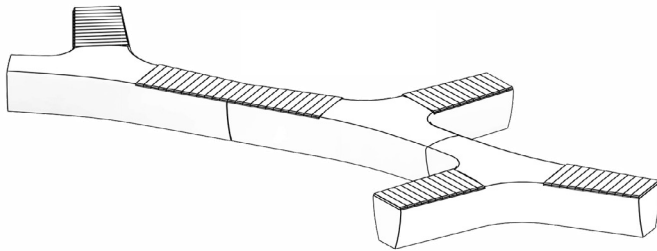
Modular bench «Delta»
2770 x 1800 x 450mm
Weight: 846kg



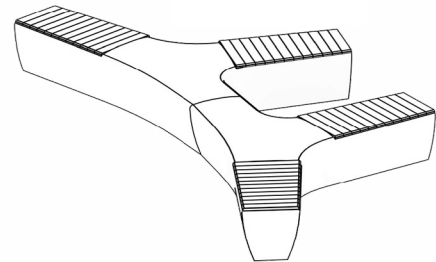
Composition 3
5180 x 4940 x 450mm
Weight: 2538kg



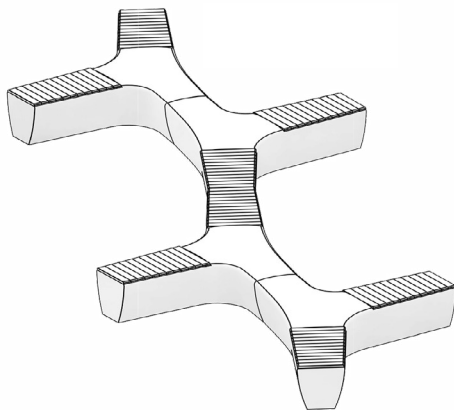
Composition 1
4770 x 2180 x 450mm
Weight: 1692kg



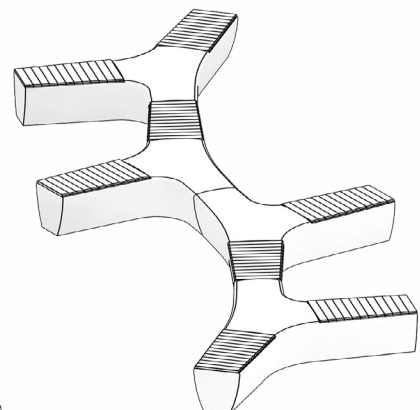
Composition 4
6990 x 3460 x 450mm
Weight: 2538kg



Composition 2
4670 x 2270 x 450mm
Weight: 1692kg



Composition 5
9230 x 3950 x 450mm
Weight: 3384kg



Composition 6
9280 x 3440 x 450mm
Weight: 3384kg

Materials

Base - composite marble.

Decking - wood-plastic composite.

Enveloped in a protective layer.

Mounting technique

Installed on a prepared foundation.

Aesthetic solutions

Base colors include white, gray, dark gray, orange, and red, as specified in the RAL Classic catalog for WPC.



Bench "Delta"



Materials:

Base - composite marble stone.
Decking - wood-polymer composite.
Covered with a protective layer.

Mounting method:

Installed on a pre-prepared base.

Decorative solutions:

The base color options are white, gray, dark gray, orange, and red. The wood-polymer composite (WPC) color is selected from the RAL Classic catalog.



Collection "Nomad"



Nomad Bin
400 x 400 x 600 mm
Weight: 66 kg
Art: 10220



Poly Drinking Fountain
400 x 800 x 1100 mm
Weight: 265 kg
Art: 10503



Nomad Tennis Table
2740 x 1500 x 950 mm
Weight: 792 kg
Art: 1090301



Nomad Tree Grate
900 x 800 x 1200mm
Weight: 170kg
Art: 10607



Nomad XL Planter
750 x 750 x 660 mm
Weight: 260 kg
Art: 1032701



Nomad L Planter
600 x 600 x 420 mm
Weight: 180 kg
Art: 1032702



Nomad XL
2000 x 2000 x 850mm
Weight: 735kg
Art: 202330201



Nomad L
1650 x 1650 x 850mm
Weight: 460kg
Art: 202330202



The concept of improving the square.

About the collection

The Nomad collection is a family of street furniture elements that combine traditional style with modern design. These pieces harmoniously blend and can give urban spaces a unique character. With their simple and contemporary shapes, they are perfect for any urban environment.

Collection "Nomad"

Collection "Nomad"



Materials:

Base - composite marble stone.

Decking - wood-polymer composite.

Covered with a protective layer.

Mounting method:

Installed on a pre-prepared base.

Decorative solutions:

Base color: white, gray, dark gray, orange, and red.

Wood-polymer composite color according to RAL

Classic catalog.



Bench Nomad two
1700 x 610 x 800mm
Weight: 301kg
Art: 202330101



Nomad one bench
1700 x 550 x 450mm
Weight: 255kg
Art: 202330102



Concept for the improvement of the square

"Orbit" Modular Benches

About the collection

Orbit compositions not only allow you to create a comfortable urban environment but also become an art object decorating the landscape. Benches and vases can be combined with each other to create radius, round, semicircular, oval or wavy compositions.



Materials

Base - composite-marble stone. Decking - wood-polymer composite. Covered with a protective layer.

Method of attachment

Mounted on a pre-prepared base

Decorative solutions

Base color white, grey, dark grey, orange and red. WPC color according to the RAL Classic catalog.



"Orbit" Modular Benches



Materials

The base is composite-marble stone.
The flooring is a wood-polymer composite.
Covered with a protective layer.

Mounting method

It is installed on a
pre-prepared base

Decorative solutions

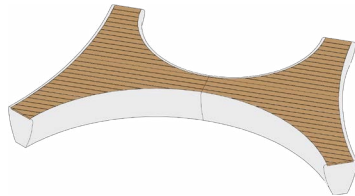
The base color is white, gray, dark gray,
orange and red. WPC color according
to the RAL Classic catalog.



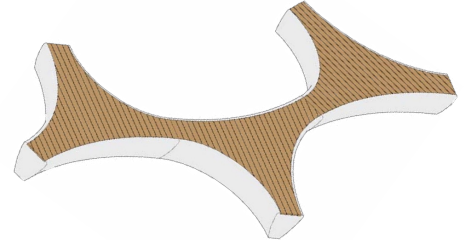
Modular benches «Orbit»



Composition 1
Diameter: 2600mm



Composition 2
4150 x 2460 x 450mm



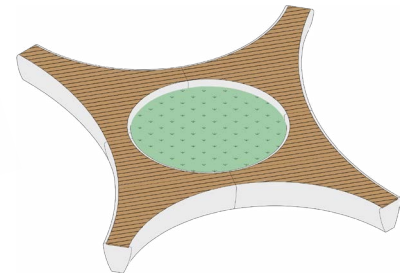
Composition 3
7430 x 3190 x 450mm



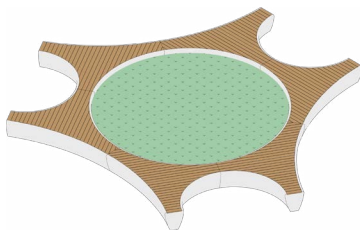
Composition 4
13040 x 3920 x 450mm



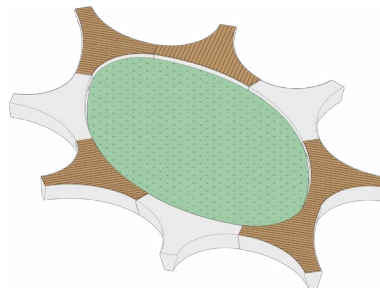
Composition 5
12900 x 3720 x 450mm



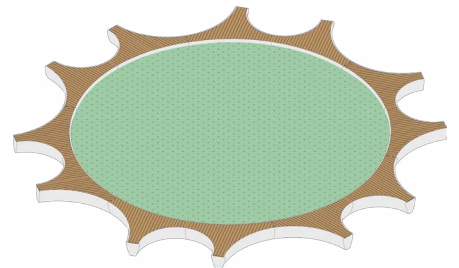
Composition 6
Diameter: 6100mm



Composition 7
Diameter: 7500mm



Composition 8
11060 x 7390 x 450mm



Composition 9
Diameter: 12300mm

Concept for the enhancement of the square



Regarding the collection

Simplicity and functionality are the defining characteristics of the Y collection, which offers numerous possibilities for the arrangement of urban spaces. The products are crafted from Archlife composite marble stone (M600 grade), ensuring exceptional strength and durability. The Y collection is further enhanced by a drinking fountain and a tennis table, which, alongside the benches, form a comprehensive complex for recreation.

“The Y” Benches & Table

Y Collection



Bench Y two
1900 x 550 x 760
mm Weight: 183 kg
Art: 202460302



Bench Y one
1900 x 530 x 450 mm
Weight: 183 kg
Art: 202460301

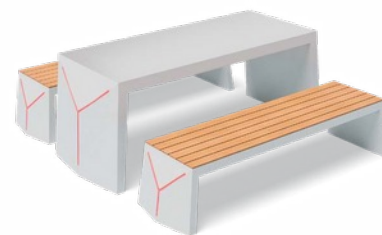


Table Y
2000 x 800 x 750
mm Weight: 407 kg
Art: 2024601



Materials

Base - composite marble stone. Decking - wood-polymer composite. Coated with a protective layer.

Attachment method

Affixed to a pre-prepared foundation

Aesthetic solutions

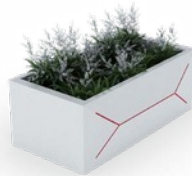
Base colors include white, grey, dark grey, orange, and red. WPC color is determined according to the RAL Classic catalog.



"The Y" collection



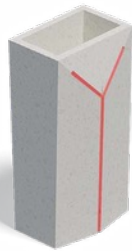
Vase Y XXL
1800 x 650 x 450 mm
Weight: 374 kg
Art: 202460201



Vase Y XL
1200 x 650 x 450 mm
Weight: 190 kg
Art: 202460202



Vase Y L
600 x 650 x 450 mm
Weight: 128 kg
Art: 202460203



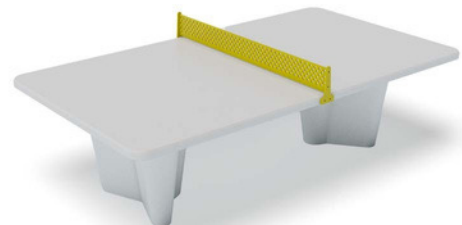
Bins Y
400 x 300 x 750 mm
Weight: 100 kg
Art: 10216



Drinking fountain Y
220 x 560 x 920 mm
Weight: 90 kg
Art: 10508



Chaise longue Y
1700 x 600 x 750 mm
Weight: 333 kg
Art: 2017602



Tennis table Y
2740 x 1500 x 950 mm
Weight: 792 kg
Art: 1090302



Serial production

About the collection

We are proud to announce the launch of a new series of urban furniture from Archlife, where every detail is carefully thought out to create the perfect atmosphere in the urban space. Thanks to the increase in the speed and volume of production up to 1000 small architectural forms per month, we guarantee an affordable price and constant availability in stock, ensuring fast delivery and installation at your site.

"Garden" Collection



© All rights reserved

Materials

Base - composite marble stone. Flooring - wood-polymer composite. Covered with a protective layer.

Method of fastening

Installed on a pre-prepared base



Decorative solutions

The base colour is white, grey, dark grey, orange and red. The colour of the WPC is according to the RAL Classic catalogue.



"Garden" Benches



Garden Bench One
1700 x 450 x 420mm
Weight: 190kg
Art: 20311010101



Garden Bench Two
1700 x 450 x 750mm
Weight: 260kg
Art: 20311010102



"Urban" Benches



Urban Bench One
1700 x 450 x 420mm
Weight: 190kg
Art: 20311010201



Urban Bench Two
1700 x 450 x 750mm
Weight: 260kg
Art: 20311010202



Flowerpots



Flowerpot S:
600 x 420mm
Weight: 190kg
Art: 20311040201



Flowerpot M:
850 x 550mm
Weight: 250kg
Art: 20311040202



Flowerpot Flower L:
600 x 750mm
Weight: 225kg
Art: 20311040203



Materials

Base - composite marble stone. Flooring - wood-polymer composite. Covered with a protective layer.



Method of fastening

Installed on a pre-prepared base



Vases "Artemida (Artemis)"



Flowerpot Artemida S
500 x 500 x 500mm
Weight: 100kg
Art: 20311040101



Vase Artemida M
1200 x 500 x 500mm
Weight: 220kg
Art: 20311040102



Flowerpot Artemida L
1700 x 500 x 500mm
Weight: 300kg
Art: 20311040103



Trunk grate Urban
1500 x 1500 x 60mm
Weight: 240kg
Art: 20221



Crystal Bin
600 x 600 x 600mm
Weight: 85kg
Art: 2031103



Compact Bin
600 x 600 x 600mm
Weight: 82kg
Art: 10214



Urban Bollard
450 x 450 x 600mm
Weight: 85kg
Art: 203110502



Drinking fountain Aqua
Life 400 x 400 x 950mm
Weight: 155kg
Art: 2031102



Materials

Base - composite marble stone. Flooring - wood-polymer composite. Covered with a protective layer.

Method of fastening

Installed on a pre-prepared base

Decorative solutions

The base colour is white, grey, dark grey, orange and red. The colour of the WPC is according to the RAL Classic catalogue.



Collection "Urban"



"Artemida" flowerpots



Park improvement concept

"Oasis" natural space for relaxation

About the collection

Oasis is a multifunctional park module that combines recreation, landscaping and social areas. Its smooth organic forms blend harmoniously into the surrounding landscape, creating a cozy space. Built-in plant pots add naturalness, and comfortable seating areas contribute to a comfortable pastime.



Materials

Base - composite marble stone. Flooring - wood-polymer composite. Covered with a protective layer.

Method of fastening

Installed on a pre-prepared base

Decorative solutions

The base colour is white, grey, dark grey, orange and red. The colour of the WPC is according to the RAL Classic catalogue.



Concept of square improvement

"Forma" - adaptive solutions for the urban environment

About the collection

A universal modular solution that combines benches, supporting elements and landscaping options into a single composition. The flexibility of the system allows you to create structures of any shape - round, wavy, linear or combined, adjusting them to the features of the space. Built-in flowerpots with trees and plants harmoniously integrate into the architectural appearance, providing a balance between nature and the urban environment.



Materials

Base - composite marble stone. Flooring - wood-polymer composite. Covered with a protective layer.

Method of fastening

Installed on a pre-prepared base

Decorative solutions

The base colour is white, grey, dark grey, orange and red. The colour of the WPC is according to the RAL Classic catalogue.





Materials

Base - composite marble stone. Flooring - wood-polymer composite. Covered with a protective layer.

Method of fastening

Installed on a pre-prepared base

Decorative solutions

The base colour is white, grey, dark grey, orange and red. The colour of the WPC is according to the RAL Classic catalogue.



Concept of square improvement

Materials

Base - composite marble stone. Flooring - wood-polymer composite. Covered with a protective layer.

Method of fastening

Installed on a pre-prepared base

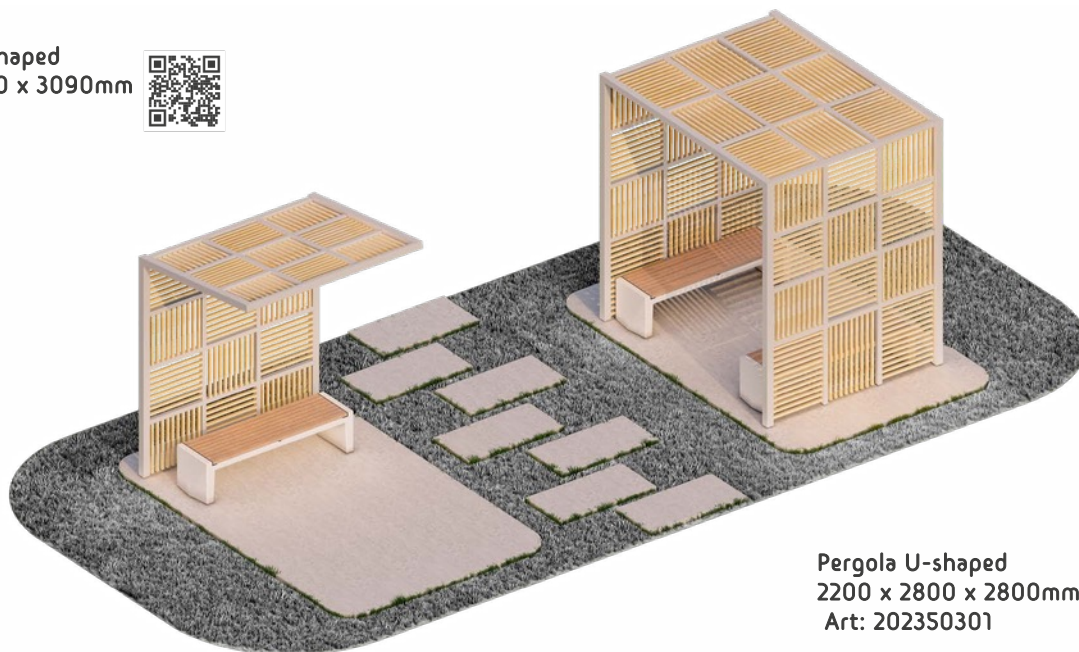
Decorative solutions

The base colour is white, grey, dark grey, orange and red. The colour of the WPC is according to the RAL Classic catalogue.



Set "Pergola"

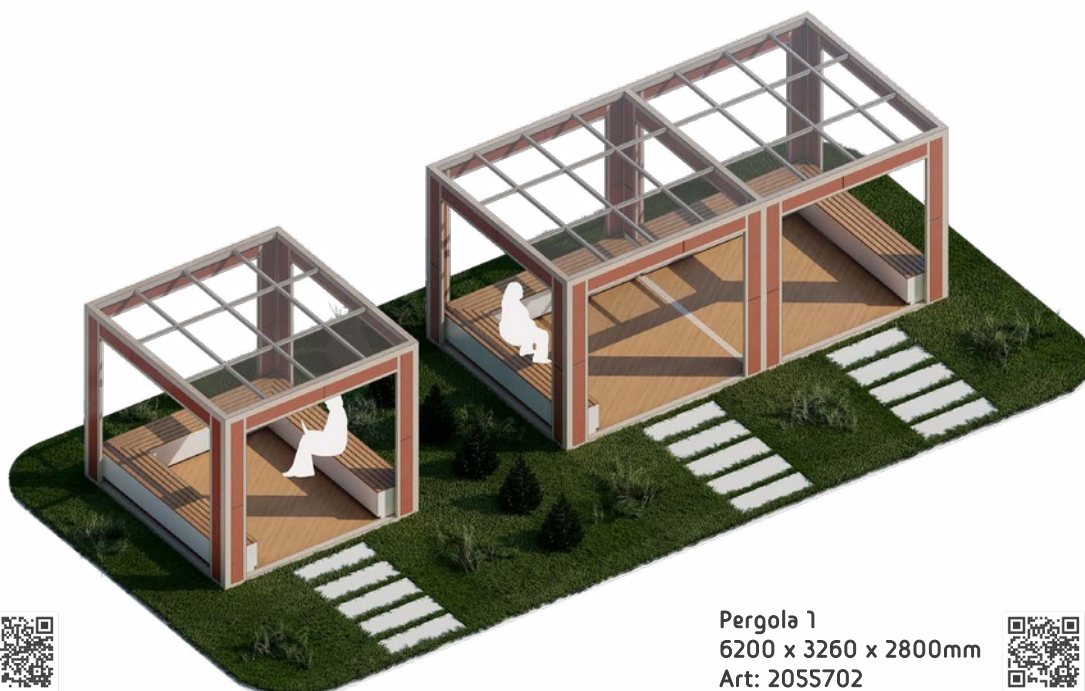
Pergola L-shaped
2200 x 1860 x 3090mm
Art: 11801



Pergola U-shaped
2200 x 2800 x 2800mm
Art: 202350301



Set "Pergola"



Pergola 1
6200 x 3260 x 2800mm
Art: 2055702



Concept of square improvement

About the collection

Pergola is a solution for creating a comfortable recreation area on a hot, sunny day. A structure with a lattice ceiling of repeating sections, united by a wooden beam or metal crossbars. It can be a free-standing structure or a composite one.

Set "Pergola"

Pergola Set

Pergola 1
6200 x 3260 x 2800mm
Art: 2055702



© All rights reserved

Concept of square improvement

Materials

Base - composite marble stone. Flooring - wood-polymer composite. Covered with a protective layer.

Method of fastening

Installed on a pre-prepared base

Decorative solutions

The base colour is white, grey, dark grey, orange and red. The colour of the WPC is according to the RAL Classic catalogue.



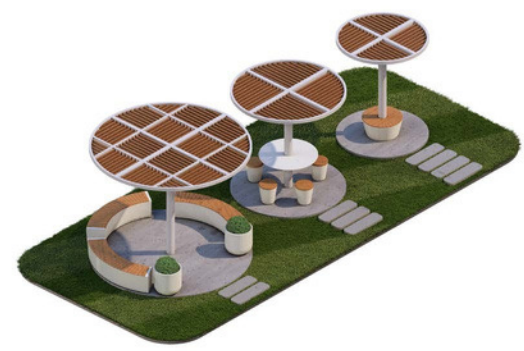
Set "Pergola"



Pergola 2 Large: 3500 x 3500 x 2800mm. Art:205870101

Medium: 2500 x 2500 x 2500mm. Art: 205870102

Small: 2000 x 2000 x 2500mm. Art: 205870103



Pergola 3 Large: 3500 x 3500 x 2800mm. Art: 205870201

Medium: 2500 x 2500 x 2500mm. Art: 205870202

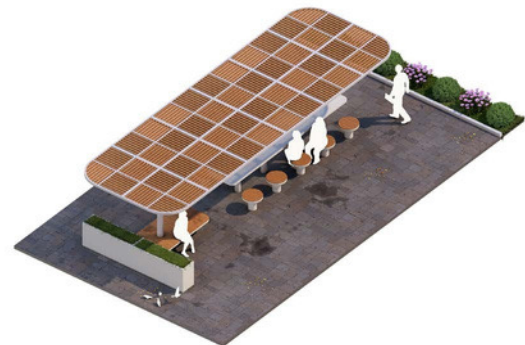
Small: 2000 x 2000 x 2500mm. Art: 205870203



Pergola 4

6540 x 6130 x 2900mm.

Art: 205870205



Pergola 5

3500 x 10500 x 2800mm.

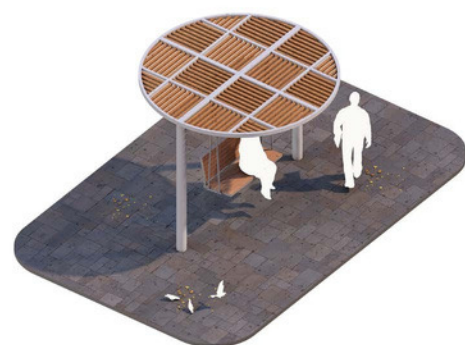
Art: 205870104



Pergola 6

6540 x 3500 x 2600mm.

Art: 205870204



Pergola 7

3500 x 3500 x 2800mm.

Art: 205870206



Concept of square improvement

Materials

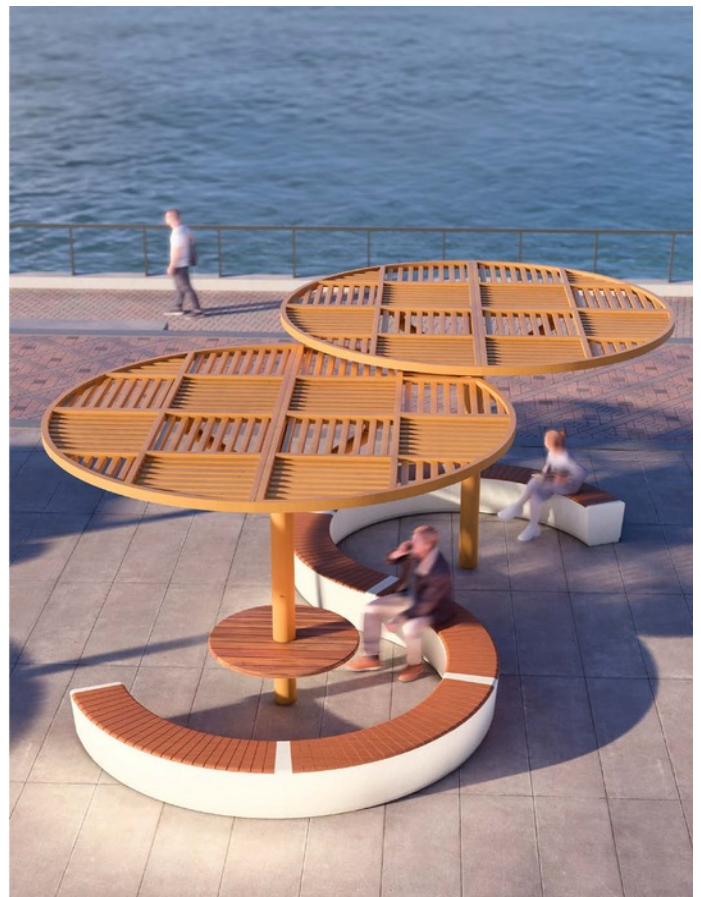
Base - composite marble stone. Flooring - wood-polymer composite. Covered with a protective layer.

Method of fastening

Installed on a pre-prepared base

Decorative solutions

The base colour is white, grey, dark grey, orange and red. The colour of the WPC is according to the RAL Classic catalogue.



© All rights reserved

Concept of square improvement

Materials

Base - composite marble stone. Flooring - wood-polymer composite. Covered with a protective layer.

Method of fastening

Installed on a pre-prepared base

Decorative solutions

The base colour is white, grey, dark grey, orange and red. The colour of the WPC is according to the RAL Classic catalogue.



Set "Pergola"



Concept of square improvement

Materials

Base - composite marble stone. Flooring - wood-polymer composite. Covered with a protective layer.

Method of fastening

Installed on a pre-prepared base

Decorative solutions

The base colour is white, grey, dark grey, orange and red. The colour of the WPC is according to the RAL Classic catalogue.



Chess table

"A space for intellectual relaxation and communication"

About the collection

An outdoor chess table with comfortable seats is an ideal place for intellectual relaxation in parks and squares. Durable materials and laconic design provide durability and comfort. Pergolas create shade, making the game enjoyable at any time of the day.



Chess table
860 x 860 x 730mm
Weight: 235kg
Art: 2051401



Chess chair
350 x 350 x 445mm
Weight: 57kg
Art: 2051402



Materials

Base - composite marble stone. Flooring - wood-polymer composite. Covered with a protective layer.

Method of fastening

Installed on a pre-prepared base

Decorative solutions

The base colour is white, grey, dark grey, orange and red. The colour of the WPC is according to the RAL Classic catalogue.



Chess Table



Original city stones

Pebble stones

About the collection

Original urban art objects imitating natural pebbles. They function as benches, creating a cozy space for relaxation. The smooth shape and natural shades fit harmoniously into modern landscape design.



Materials

Base - composite marble stone. Flooring - wood-polymer composite. Covered with a protective layer.

Method of fastening

Installed on a pre-prepared base

Decorative solutions

The base colour is white, grey, dark grey, orange and red. The colour of the WPC is according to the RAL Classic catalogue.



Pebble stones XL
1750 x 1310 x 450mm
Art: 2041703



Pebble stones L
1205 x 900 x 350mm
Art: 2041702



Pebble stones M
840 x 630 x 240mm
Art: 2041701



Bench with lighting



"Sonata"

About the collection

Functional street bench with integrated lighting. Creates a cozy atmosphere and improves safety in the evening. Durable materials and laconic design make it a stylish element of urban space.



Sonata stone 1590
x 1450 x 490mm
Art: 2041602



"Sonata"



Sonata with canopy
1680 x 1320 x 2200mm
Art: 2041603



Sonata with backlight
1670 x 1320 x 2580mm
Weight: 1450kg
Art: 2041601





Collection "Astra"

"Astra"

About the collection

The Astra collection is elegant and functional elements of the urban environment, combining comfort and style. Laconic forms, comfortable seats and thoughtful ergonomics create a cozy atmosphere for relaxation. Modern materials ensure durability, and the modularity of the solutions allows integrating elements into various urban spaces.



Bench Astra 1
2150 x
1050 x 850mm
Weight: 1250kg
Art: 205910102



Bench Astra 2
2150 x 1050 x 850mm
Weight: 1200kg
Art: 205910101



Bench Astra 3
2520 x 2520 x 850mm
Weight: 1850kg
Art: 205910201



Bench Astra 4
2520 x 2520 x 850mm
Weight: 1900kg
Art: 205910202



Flowerpot Astra XL
900 x 900 x
450mm Weight:
475kg
Art: 205910401



Flowerpot Astra L
600 x 600 x
450mm Weight:
240kg
Art: 205910402



Astra waste bin
600 x 600 x 900mm
Weight: 375kg
Art: 2059103



Collection "Astra"

Materials

Base - composite marble stone. Flooring - wood-polymer composite. Covered with a protective layer.

Method of fastening

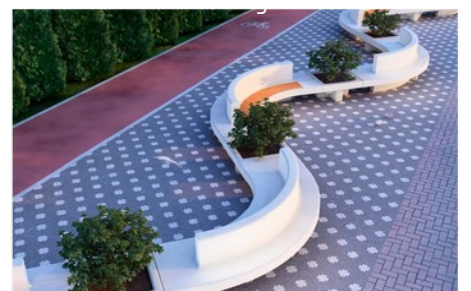
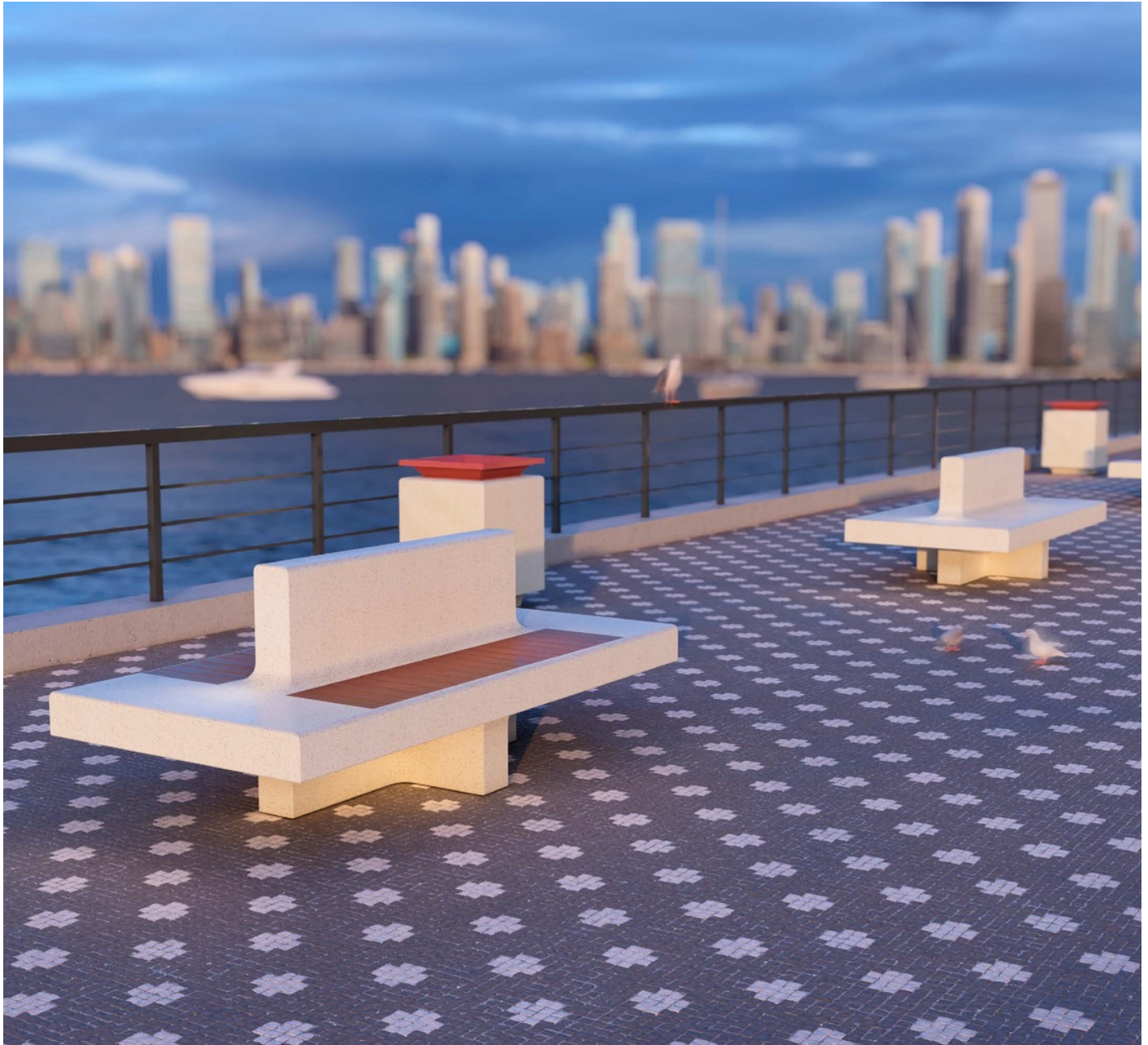
Installed on a pre-prepared base

Decorative solutions

The base colour is white, grey, dark grey, orange and red. The colour of the WPC is according to the RAL Classic catalogue.



Collection Designed By "Tovmasyan Nerses"



Swing "Sultan"

Materials

Base - composite marble stone. Flooring - wood-polymer composite. Covered with a protective layer.

Method of fastening

Installed on a pre-prepared base

Decorative solutions

The base colour is white, grey, dark grey, orange and red. The colour of the WPC is according to the RAL Classic catalogue.



Collection Designed By "Egemberdiev Shadiyar"



Swing "Sultan",
2520 x 2520 x 4480mm
Art: 2058501



Bench «Sultan»,
2520 x 2550 x 4480mm
Art: 2058502

Swing "Sultan"

"Sultan"

About the collection

Sultan is inspired by the elegance of oriental style, combining the sophistication of forms with the strength of the structure. They are created for comfortable relaxation in public spaces - parks, embankments, squares and courtyards. Reliable materials provide durability and resistance to weather conditions, and the thoughtful design fits harmoniously into the urban environment, creating a cozy place for meetings and relaxation.



Collaboration for architects and designers

We help architects create designs for public spaces and improvement projects. We will select standard products from ready-made solutions or develop and produce small architectural forms according to individual drawings, and help implement them into your project, which will significantly speed up and facilitate the work.



We provide drawings and 3D models



We provide consulting and technical support in the implementation of projects



There is an agency reward program in effect

Archilife products are presented in the list of consolidated estimate standards (USN), which will allow you to quickly make an estimate calculation and pass an examination.

Our mission is to create a comfortable urban environment that will improve the quality of life of people and the attractiveness of cities in Saudi Arabia. Small architectural forms from Archilife are environmentally friendly, have a long service life and certificates of conformity

Let's create a comfortable urban environment together!

To become an Archilife partner and receive drawings and 3D models, please contact: us

info@naturallife.com.sa

Art objects

About the collection

The art object combines traditional ornaments and modern design, giving the urban environment a unique character. Made of composite stone and polymer materials, it is resistant to external conditions. Simple but expressive form makes it a harmonious element of any space. Suitable for parks, squares and city squares, creating an atmosphere of cultural heritage and comfort.

Obelisk "National Patterns"

Art object



Materials

Base - composite marble stone. Flooring - wood-polymer composite. Covered with a protective layer.

Method of fastening

Installed on a pre-prepared base

Decorative solutions

The base colour is white, grey, dark grey, orange and red. The colour of the WPC is according to the RAL Classic catalogue.



Obelisk "National Patterns"

Obelisk "National Patterns"



Art object 3
1715 x 835 x 1990mm
RAL Classic Art: 2051501



Art object 5
2300 x 540 x 1645mm
RAL Classic
Art: 2051502

Obelisk "National Patterns"



Art object 2
2540 x 595 x 1035mm
RAL Classic
Art: 2051503



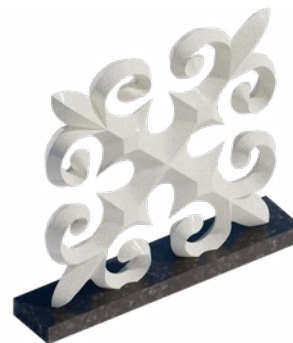
Art object 6
4990 x 570 x 1735mm
RAL Classic
Art: 2051504



Obelisk "National Patterns"



Art object 1
4335 x 525 x 1800mm RAL Classic
Art: 2051505



Art object 7
2600 x 550 x 2500mm
RAL Classic
Art: 2051506

Art objects

Materials

Base - composite marble stone. Flooring - wood-polymer composite. Covered with a protective layer.

Method of fastening

Installed on a pre-prepared base

Decorative solutions

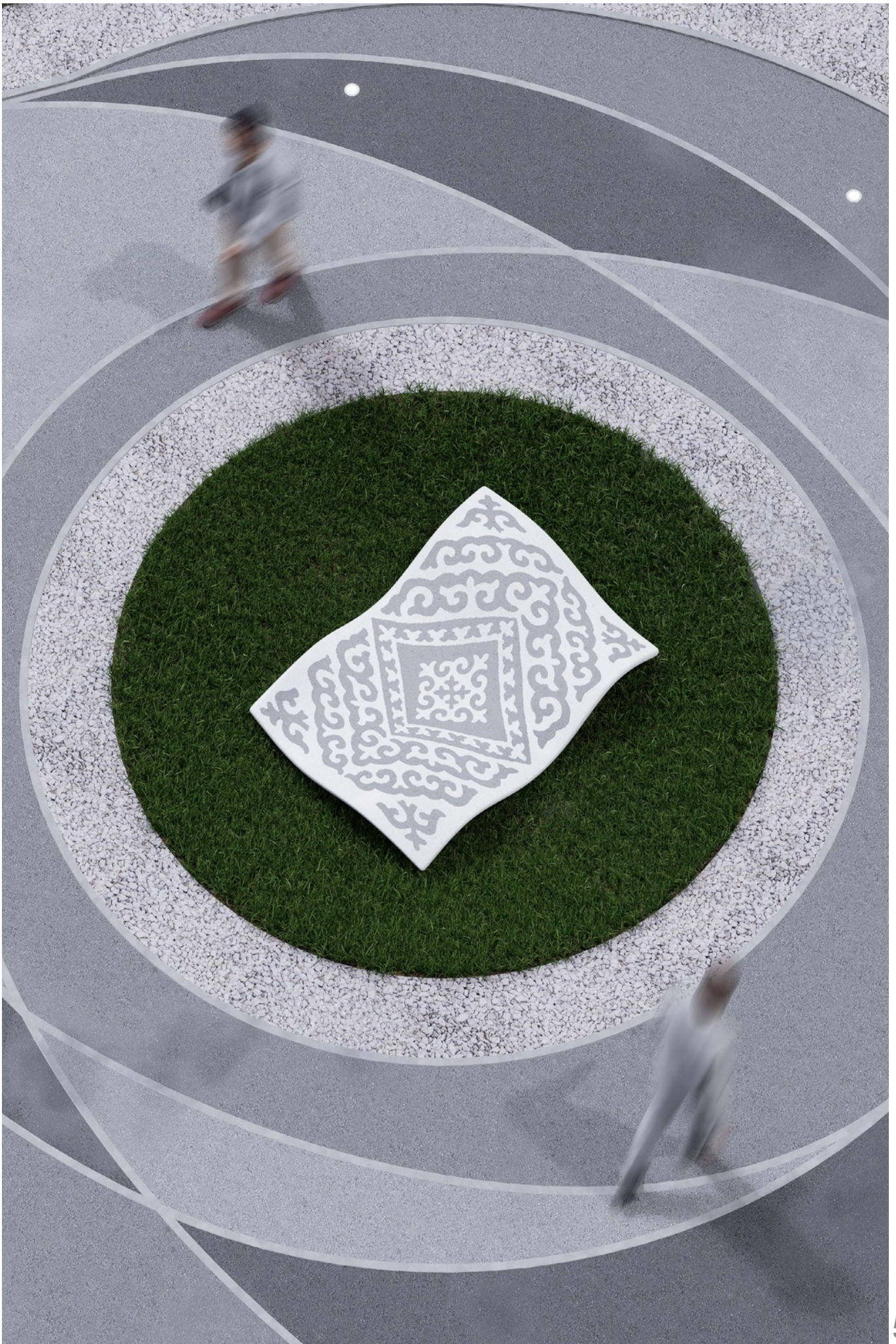
The base colour is white, grey, dark grey, orange and red. The colour of the WPC is according to the RAL Classic catalogue.



Art object



© All rights reserved

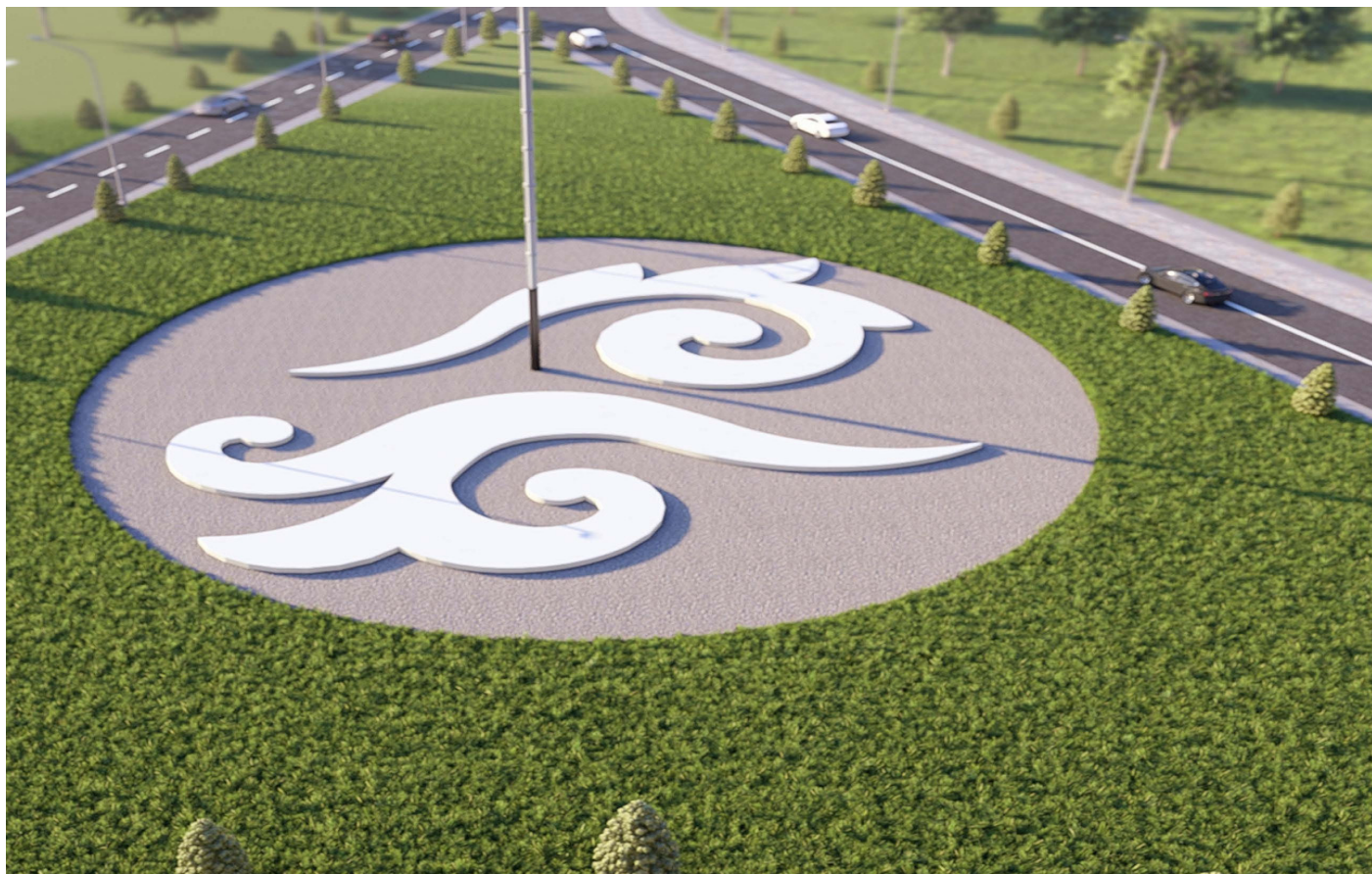


Improvement of the routes

National ornaments in landscaping

About the collection

Decorative compositions with traditional patterns give the roads and junctions an aesthetic appearance. The elements blend harmoniously with the landscape, creating expressive accents in the urban environment. Durable materials ensure durability and resistance to external conditions.



Materials

Base - composite marble stone. Flooring - wood-polymer composite. Covered with a protective layer.

Method of fastening

Installed on a pre-prepared base

Decorative solutions

The base color is white, grey, dark grey, orange and red. The color of the WPC is according to the RAL Classic catalogue.





Materials

Base - composite marble stone. Flooring - wood-polymer composite. Covered with a protective layer.

Method of fastening

Installed on a pre-prepared base

Decorative solutions

The base colour is white, grey, dark grey, orange and red. The colour of the WPC is according to the RAL Classic catalogue.



Pedestrian zone improvement concept



Tile type 1
1240 x 560 x 80mm
Weight: 65kg
Art: 2048401



Tile type 2, size XXL
1200 x 1200 x 80mm
Weight: 225kg
Art: 2048402

Tile type 2, size XL
800 x 800 x 80mm
Weight: 100kg
Art: 2048402



Tile type 3, size XXL
4000 x 1000 x 80mm
Weight: 750kg
Art: 2048403

Tile type 3, size XL
1100 x 500 x 80mm
Weight: 350kg
Art: 2048403

Tile type 2, size L
500 x 500 x 80mm
Weight: 40kg
Art: 2048402

Tile type 3, size L
800 x 500 x 80mm
Weight: 70kg
Art: 2048403

Materials

Base - composite marble stone. Flooring - wood-polymer composite. Covered with a protective layer.

Method of fastening

Installed on a pre-prepared base

Decorative solutions

The base colour is white, grey, dark grey, orange and red. The colour of the WPC is according to the RAL Classic catalogue.



Pedestrian zone improvement concept



Tile type 4, XXL
1200 x 1200 x 80mm
Weight: 285kg
Art: 2048404

Tile type 4, XL
800 x 800 x 80mm
Weight: 125kg
Art: 2048404



Tile type 5, size XL
1245 x 785 x 80mm
Weight: 160kg
Art: 2048405

Braid type 5, L
970 x 495 x 80mm
Weight: 75kg
Art: 2048405

Tile type 4, L
500 x 500 x 80mm
Weight: 50kg
Art: 2048404



Tile type 3, M
1200 x 500 x 80mm
Weight: 105kg
Art: 2048406

Materials

Base - composite marble stone. Flooring - wood-polymer composite. Covered with a protective layer.

Method of fastening

Installed on a pre-prepared base

Decorative solutions

The base colour is white, grey, dark grey, orange and red. The colour of the WPC is according to the RAL Classic catalogue.



"S" Benches



Bench Wave 1200
x 200 x 800mm
Weight: 210kg
Art: 20308

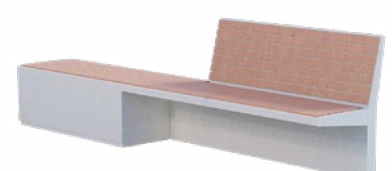
© All rights reserved



Bench Astra 3
2520 x 2520 x 850mm
Weight: 1850kg
Art: 205910201



Bench Astra 4
2520 x 2520 x 850mm
Weight: 1900kg
Art: 205910202



Bench Almaz-1
2100 x 600 x 900mm
Weight: 504kg
Art: 10114



Bench Astra 1
2150 x 1050 x 850mm
Weight: 1250kg
Art: 205910102



Bench Astra 2
2150 x 1050 x 850mm
Weight: 1200kg
Art: 205910101



Materials

Base - composite marble stone. Flooring - wood-polymer composite. Covered with a protective layer.

Method of fastening

Installed on a pre-prepared base

Decorative solutions

The base colour is white, grey, dark grey, orange and red. The colour of the WPC is according to the RAL Classic catalogue.



Benches



Bench Klever-1
2700 x 2400 x
420mm Weight:
690kg Art: 10148



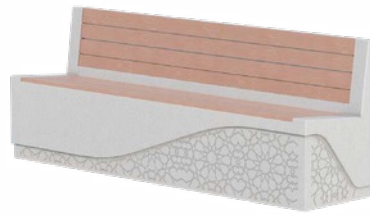
Bench Leader one
2200 x 500 x
450mm Weight:
246kg Art: 1012202



Bench Leader two
2000 x 500 x
900mm Weight:
238kg Art: 1012201



Bench Comfort classic-1
2000 x 2000 x 890mm
Weight: 765kg
Art: 1010301



Bench Spirit Two
2000 x 510 x 790mm
Weight: 520kg
Art: 1014102



Bench Spirit One
2000 x 500 x 450mm
Weight: 459kg
Art: 1014101



Bench Ondã bench one
1800 x 495 x 450mm
Weight: 266kg
Art: 1010202



Bench Ondã bench two
1800 x 495 x 930mm
Weight: 255kg
Art: 1010203



Bench Sota-1
1000 x 1160 x
450mm
Weight: 136kg
Art: 10106



Materials

Base - composite marble stone. Flooring - wood-polymer composite. Covered with a protective layer.

Method of fastening

Installed on a pre-prepared base

Decorative solutions

The base colour is white, grey, dark grey, orange and red. The colour of the WPC is according to the RAL Classic catalogue.



Benches



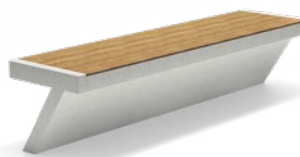
Bench Modern With Lounger
3000 x 1340 x 1050mm
Weight: 582kg
Art: 2049006



NEO:
1800 x 600 x 450mm
Weight: 341kg
Art: 10126



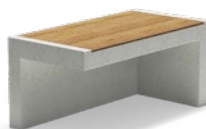
Bench Glow 4
1000 x 500 x 460mm
Weight: 207kg
Art: 2034304



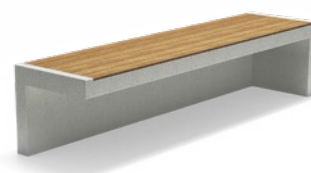
Bench Glow 5
2000 x 500 x 460mm
Weight: 377kg
Art: 2034305



Bench Glow 1
2000 x 500 x 460mm
Weight: 380kg
Art: 2034301



Bench Glow 2
1000 x 500 x 460mm
Weight: 207kg
Art: 2034302



Bench Glow 3
2000 x 500 x 460mm
Weight: 380kg
Art: 2034303



Materials

Base - composite marble stone. Flooring - wood-polymer composite. Covered with a protective layer.

Method of fastening

Installed on a pre-prepared base

Decorative solutions

The base colour is white, grey, dark grey, orange and red. The colour of the WPC is according to the RAL Classic catalogue.



Benches



Bench Breeza two
2000 x 735 x 840mm
Weight: 335kg
Art: 2035201



Bench Breeza one
2000 x 735 x 450mm
Weight: 367kg
Art: 2035202



Bench Breeze
2000 x 735 x 450mm
Weight: 432kg
Art: 2035203



Bench Modern 4
2000 x 500 x 450mm
Weight: 402kg
Art: 204900302



Bench Modern Radial 2
2094 x 500 x 450mm
Weight: 372kg
Art: 204900501



Bench Modern Radial 1
2094 x 500 x 450mm
Weight: 372kg
Art: 204900502



Bench Modern One 3m
3000 x 500 x 450mm
Weight: 582kg
Art: 204900101



Bench Modern Two 2m
2000 x 500 x 845mm
Weight: 402kg
Art: 204900202



Bench Modern With Table 2m
2000 x 500 x 845mm
Weight: 402kg
Art: 204900402





Origami luminaire,
0.18 x 0.23 x 0.94 m
Weight: 30 kg Art: 11001

Origami Bench,
1.9 x 0.5 x 0.45 m Weight:
230 kg RAL 1011 Art:
1010101

Table August
2.05 x 0.9 x 0.75 m
Weight: 559 kg RAL
1011 Art: 10801

Materials

Base - composite marble stone. Flooring - wood-polymer composite. Covered with a protective layer.

Method of fastening

Installed on a pre-prepared base

Decorative solutions

The base colour is white, grey, dark grey, orange and red. The colour of the WPC is according to the RAL Classic catalogue.



Benches

"Fireplace" for Outdoor Area

About the Collection

A contemporary fire pit featuring integrated seating enhances the inviting ambiance for outdoor leisure. The use of natural materials, minimalist design, and practical arrangement render the space perfect for social gatherings and enjoyable relaxation.



Bench "Fireplace"
3680 x 3680 x 890
mm Art: 2032602



Materials

Base - composite marble. Flooring - wood-polymer composite. Coated with a protective layer.

Method of attachment

Installed on a prepared foundation

Aesthetic solutions

The base colors include white, grey, dark grey, orange, and red. The color of the WPC corresponds to the RAL Classic catalogue.



"Fireplace" Benches



© All rights reserved.

Benches



Garden Bench One
1700 x 450 x 420 mm
Weight: 190 kg
Art: 20311010101



Garden Bench Two
1700 x 450 x 750 mm
Weight: 260 kg
Art: 20311010102



Urban Bench One
1700 x 450 x 420 mm
Weight: 190 kg
Art: 20311010201



Bench Megatron one
1970 x 470 x 450 mm
Weight: 174 kg
Art: 1014401



Bench Megatron two
1970 x 550 x 850 mm
Weight: 174 kg
Art: 1014402



Urban Bench Two
1700 x 450 x 750 mm
Weight: 260 kg
Art: 20311010202



Materials

Base - composite marble stone. Flooring - wood-polymer composite. Encased in a protective layer.

Method of attachment

Installed on a prepared foundation

Aesthetic solutions

The base colors include white, grey, dark grey, orange, and red. The color of the WPC corresponds to the RAL Classic catalogue.



Benches



Materials

Base - composite marble. Flooring - wood-polymer composite. Coated with a protective layer.

Method of attachment

Installed on a prepared foundation

Aesthetic solutions

The base colors include white, grey, dark grey, orange, and red. The color of the WPC corresponds to the RAL Classic catalogue.



Benches



Bench Reforma two
1800 x 450 x 900 mm
Weight: 145 kg
Art: 202430301



Bench Reforma one
1800 x 450 x 450 mm
Weight: 62 kg
Art: 202430302



Bench Y one
1900 x 530 x 450 mm
Weight: 183 kg
Art: 202460301



Origami Two Bench
1900 x 500 x 900 mm
Weight: 260 kg
Art: 1010102



Origami One Bench
1920 x 565 x 450 mm
Weight: 225 kg
Art: 1010101



Bench Y two
1900 x 550 x 760 mm
Weight: 183 kg
Art: 202460302



Bench Ar-Nuvo two
1800 x 450 x 750 mm
Weight: 97 kg
Art: 202380401



Bench Ar-Nuvo One
1800 x 450 x 450 mm
Weight: 62 kg
Art: 202380402



Bench Vector
2000 x 1140 x 850 mm
Weight: 1580 kg
Art: 2046102



Benches



Bench Arkā 1580
x 500 x 450 mm
Weight: 212 kg
Art: 20555

© All rights reserved.

Materials

Base - composite marble. Flooring - wood-polymer composite. Coated with a protective layer.

Method of attachment

Installed on a prepared foundation

Aesthetic solutions

The base colors include white, grey, dark grey, orange, and red. The color of the WPC corresponds to the RAL Classic catalogue.



Bench Nomad two
1700 x 610 x 800 mm
Weight: 301 kg
Art: 202330101



Bench Nomad One
1700 x 550 x 450 mm
Weight: 255 kg
Art: 202330102



Bench Wave
1200 x 200 x 800 mm
Weight: 210 kg
Art: 20308



Concept of square enhancement

Materials

Base - composite marble. Flooring - wood-polymer composite. Coated with a protective layer.

Method of attachment

Installed on a pre-prepared foundation



"Mangilik" Modern bench





Flowerpots



© All rights reserved



Flowerpot Nomad XL
750 x 750 x 660 mm
Weight: 260 kg
Art: 1032701



Flowerpot Nomad L
600 x 600 x 420 mm
Weight: 180 kg
Art: 1032702



Ar-Nuvo XXL flowerpot
1600 x 1600 x 700 mm
Weight: 537 kg
Art: 202380302



Artemida flowerpot
1800 x 500 x 450 mm
Weight: 350 kg
Art: 1030101



Glow flowerpot
600 x 600 x 600 mm
Weight: 165 kg
Art: 2034306



Flowerpot Modern XL
700 x 700 x 700 mm
Weight: 310 kg
Art: 204900902



Flowerpot Modern L
500 x 500 x 500 mm
Weight: 147 kg
Art: 204900901



Materials

Base - composite marble. Flooring - wood-polymer composite. Coated with a protective layer.

Method of attachment

Installed on a prepared foundation

Aesthetic solutions

The base colors are white, grey, dark grey, orange, and red. The color of the WPC corresponds to the RAL Classic catalogue.



Flowerpot Y XXL
1800 x 650 x 450 mm
Weight: 374 kg
Art: 202460201



Flowerpot Y XL
1200 x 650 x 450 mm
Weight: 190 kg
Art: 202460202



Flowerpot Y L
600 x 650 x 450 mm
Weight: 128 kg
Art: 202460203



Flowerpot Reformā XXL
8800 x 500 x 550 mm
Weight: 211 kg
Art: 202430401



Flowerpot Reformā XL
1200 x 500 x 550 mm
Weight: 150 kg
Art: 202430402



Flowerpot Reformā L
600 x 500 x 550 mm
Weight: 90 kg
Art: 202430403



Flowerpot Ar-Nuvo L
900 x 900 x 600 mm
Weight: 202 kg
Art: 202380304



Flowerpot Ar-Nuvo XL
1200 x 1200 x 650 mm
Weight: 330 kg
Art: 202380303



Flowerpot Ar-Nuvo XXL
1700 x 1700 x 750 mm
Weight: 596 kg
Art: 202380301



Materials

The base is composed of marble stone and is coated with a protective layer.

Method of attachment

Installed on a prepared foundation

Aesthetic solutions

The primary colors are white, gray, dark gray, orange, and red.



Flowerpots



Yarus's flowerpot 1
600 x 600 x 600 mm
Weight: 95 kg
Art: 10313



Radius flowerpot 1
700 x 700 x 700 mm
Weight: 121 kg
Art: 10312



Nomad XL planter,
0.75 L x 0.66 m Weight: 26 kg
Art: 1032701

© All rights reserved.

Materials

The base is composed of marble stone and is coated with a protective layer.

Method of attachment

Installed on a prepared foundation

Aesthetic solutions

The primary colors are white, gray, dark gray, orange, and red.



Flowerpots



Flowerpot S:
600 x 420 mm
Weight: 190 kg
Art: 20311040201



Flowerpot M:
850 x 550 mm
Weight: 250 kg
Art:
20311040202



Flowerpot Flower L:
600 x 750 mm
Weight: 225 kg
Art: 20311040203



Flowerpot Artemida S
500 x 500 x 500 mm
Weight: 100 kg
Art: 20311040101



Vase Artemida M
1200 x 500 x 500 mm
Weight: 220 kg
Art: 20311040102



Flowerpot Artemida L
1700 x 500 x 500 mm
Weight: 300 kg
Art: 20311040103



Crown 1 flowerpot
1040 x 1200 x 350 mm
Weight: 207 kg
Art: 10306



Spiral flowerpot
1600 x 500 x 450 mm
Weight: 308 kg
Art: 10330

Materials

Base - composite marble. Flooring - wood-polymer composite. Coated with a protective layer.

Method of attachment

Installed on a prepared foundation

Aesthetic solutions

The base colors include white, grey, dark grey, orange, and red. The color of the WPC corresponds to the RAL Classic catalogue.



"Terra"

Contemporary flowerpot



Terra XXL flowerpot
1060 x 1060 x 1110 mm
Art: 204870103



Terra XL flowerpot
630 x 630 x 1110 mm
Art: 204870102



Terra L flowerpot
630 x 630 x 710 mm
Art: 204870101



Flowerpot "Alma"

Materials

Base - composite marble. Flooring - wood-polymer composite. Coated with a protective layer.

Method of attachment

Installed on a prepared foundation

Aesthetic solutions

The base colors include white, grey, dark grey, orange, and red. The color of the WPC corresponds to the RAL Classic catalogue.



Contemporary flowerpot "Alma"



Flowerpot Alma 1
840 x 840 x 500 mm
Art: 205650201



Flowerpot Alma 2
840 x 840 x 630 mm
Art: 205650202



Flowerpot Alma 3
820 x 820 x 850 mm
Art: 205650203



Flowerpot Alma 4
1890 x 1890 x 1100 mm
Art: 205650204



Flowerpot Alma 5
2000 x 2000 x 700 mm
Art: 205650205



Materials

Base - composite marble. Flooring - wood-polymer composite. Coated with a protective layer.

Method of attachment

Installed on a prepared foundation

Aesthetic solutions

The base colors include white, grey, dark grey, orange, and red. The color of the WPC corresponds to the RAL Classic catalogue.

Flowerpot "Cube"



Flowerpot "Cube"

Materials

Base - composite marble. Flooring - wood-polymer composite. Coated with a protective layer.

Method of attachment

Installed on a prepared foundation

Aesthetic solutions

The base colors include white, grey, dark grey, orange, and red. The color of the WPC corresponds to the RAL Classic catalogue.



Contemporary flowerpot "Cub"



Flowerpot Cub 100
1000 x 1000 x 1000
mm Art: 1032403



Flowerpot Cub 50
800 x 800 x 800
mm Art: 1032402



Flowerpot Cub 20
600 x 600 x 650
mm Art: 1032401



The concept of landscaping the square

Modular set «Crema»

About the collection

The modular set «Crema» is available in triangular, square and rectangular shapes, which can be swapped, supplemented with details, combined with each other. This allows it to be placed not only in a large, open space, but also on sidewalks.



Materials

The base is composite-marble stone.
The flooring is a wood-polymer composite.
Covered with a protective layer.

Mounting method

It is installed on a pre-prepared base

Decorative solutions

The base color is white, gray, dark gray, orange and red. WPC color according to the RAL Classic catalog.



Tree grates Kalkan,
0,8 x 0,9 x 1,2 m
Weight: 176kg
RAL 1011
Art: T_6_5

Set «Crema Duo»,
3,4 x 1,6 x 0,6 m
Weight: 850kg
RAL 1011

Materials

Base - composite marble. Flooring - wood-polymer composite. Coated with a protective layer.

Method of attachment

Installed on a prepared foundation

Aesthetic solutions

The base colors are white, grey, dark grey, orange, and red. The color of the WPC corresponds to the RAL Classic catalogue.



Bins



Materials

Base - composite marble. Flooring - wood-polymer composite. Coated with a protective layer.

Method of attachment

Installed on a prepared foundation

Aesthetic solutions

The base colors are white, grey, dark grey, orange, and red. The color of the WPC corresponds to the RAL Classic catalogue.



Bins



Urn Cora 400 x 300 x 700 mm
Weight: 51 kg
Art: 10210



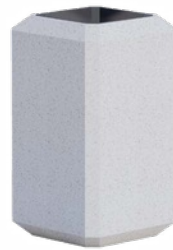
Urn Spirit 400 x 400 x 700 mm
Weight: 115 kg
Art: 10215



Leader Urn 400 x 400 x 750 mm
Weight: 130 kg
Art: 10208



Bin Y-4
400 x 400 x 750 mm
Weight: 110 kg
Art: 10202



Congress Bin
350 x 350 x 620 mm
Weight: 86 kg
Art: 10207



Yarus Bin
450 x 450 x 750 mm
Weight: 103 kg
Art: 10211



Astra Waste Bin
600 x 600 x 900 mm
Weight: 375 kg
Art: 2059103



Urn Artem 400 x 400 x 750 mm
Weight: 115 kg
Art: 10201



Moon urn 450 x 450 x 750 mm
Weight: 108 kg
Art: 10204





© All rights reserved

Materials

Base - composite marble. Flooring - wood-polymer composite. Encased in a protective layer.

Method of attachment

Installed on a pre-prepared foundation

Aesthetic solutions

The base colors include white, grey, dark grey, orange, and red. The color of the WPC corresponds to the RAL Classic catalogue.



Bins



Reforma Bin XL
750 x 750 x 500mm
Weight: 286kg
Art: 202430603



Reforma Bin L
500 x 750 x 500 mm
Weight: 183 kg
Art: 202430602



Crystal Bin
600 x 600 x 600 mm
Weight: 85 kg
Art: 2031103





Materials

Base - composite marble. Flooring - wood-polymer composite. Encased in a protective layer.

Method of attachment

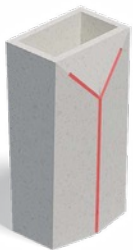
Installed on a pre-prepared foundation

Aesthetic solutions

The base colors include white, grey, dark grey, orange, and red. The color of the WPC corresponds to the RAL Classic catalogue.



Bins



Bin Y
400 x 300 x 750 mm
Weight: 100 kg
Art: 10216



Bin Nomad
400 x 400 x 600 mm
Weight: 66 kg
Art: 10220



Bin Compact
600 x 600 x 600 mm
Weight: 82 kg
Art: 10214



Materials

Base - composite marble. Flooring - wood-polymer composite. Coated with a protective layer.

Method of attachment

Installed on a prepared foundation



Recycle Bins



Materials

Base - composite marble. Flooring - wood-polymer composite. Coated with a protective layer.

Method of attachment

Installed on a prepared foundation

Aesthetic solutions

The base colors include white, grey, dark grey, orange, and red. The color of the WPC corresponds to the RAL Classic catalogue.



Recycle Bins



Modern Bin XXL
1040 x 400 x 920 mm
Art: 204900803



Modern Bin XL
720 x 400 x 920 mm
Art: 204900802



Modern Bin L
400 x 400 x 920 mm
Art: 204900801



Materials

Base - composite marble. Flooring - wood-polymer composite. Coated with a protective layer.

Method of attachment

Installed on a prepared foundation

Aesthetic solutions

The base colors include white, grey, dark grey, orange, and red. The color of the WPC corresponds to the RAL Classic catalogue.



Tree grates



Leave Grate
1500 x 1500 x 60 mm
Weight: 172 kg
Art: 10604



Disk grate
1500 x 1500 x 60 mm
Weight: 207 kg
Art: 10602



Ar-Nuvo grille grate
1500 x 1500 x 60 mm
Weight: 176 kg
Art: 10603



Materials

Base - composite marble. Flooring - wood-polymer composite. Coated with a protective layer.

Method of attachment

Installed on a prepared foundation

Aesthetic solutions

The base colors include white, grey, dark grey, orange, and red. The color of the WPC corresponds to the RAL Classic catalogue.



Tree Trunk Grates



Urban grate
1500 x 1500 x 60 mm
Weight: 216kg
Art: 20221



Grille Qalqan
800 x 900 x 1200 mm
Weight: 216 kg
Art: 10607



Reforma grate
1200 x 1200 x 60 mm
Weight: 60 kg
Art: 2024302



Sunbed

Chaise lounge

Regarding the collection

An ergonomic lounge featuring sleek lines for optimal relaxation in embankments and open areas. Its robust frame, constructed from composite stone and wood-polymer materials, ensures durability and resilience against various weather conditions.



Chaise longue Nomad
1810 x 700 x 880 mm
Art: 2058902



Chaise longue Y
1700 x 600 x 750 mm
Weight: 333 kg
Art: 2017602



Chaise longue Reforma
720 x 740 x 1460 mm
Weight: 101 kg
Art: 2024305



Materials

Base - composite marble. Flooring - wood-polymer composite. Coated with a protective layer.

Method of attachment

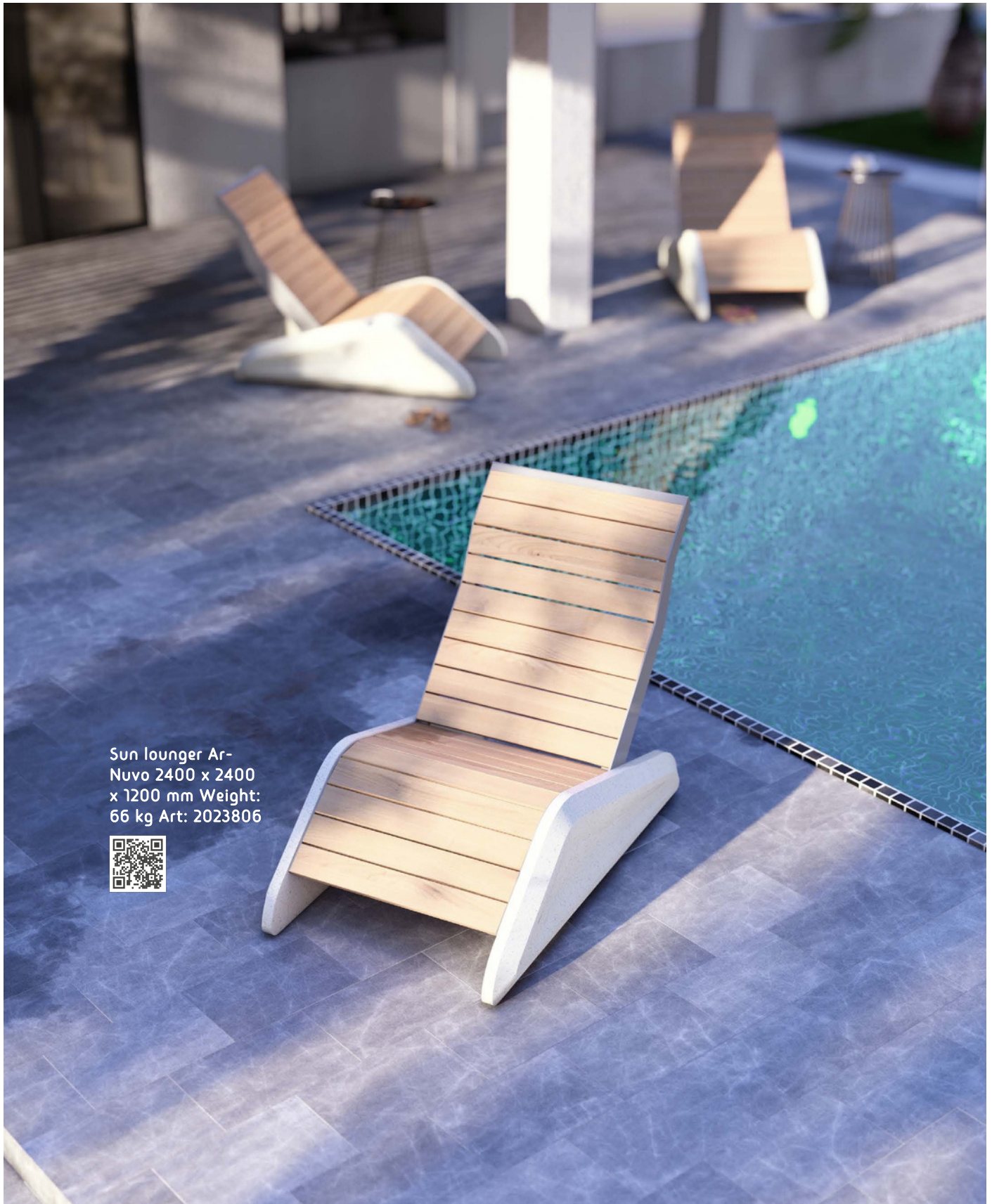
Installed on a prepared foundation

Aesthetic solutions

The base colors are white, grey, dark grey, orange, and red. The color of the WPC corresponds to the RAL Classic catalogue.



Sunbed



Sun lounger Ar-
Nuvo 2400 x 2400
x 1200 mm Weight:
66 kg Art: 2023806



Materials

Base - composite marble. Flooring - wood-polymer composite. Coated with a protective layer.

Method of attachment

Installed on a prepared foundation

Aesthetic solutions

The base colors include white, grey, dark grey, orange, and red. The color of the WPC corresponds to the RAL Classic catalogue.

**Bollard**

Materials

Base - composite marble. Flooring - wood-polymer composite. Coated with a protective layer.

Method of attachment

Installed on a prepared foundation

Aesthetic solutions

The base colors include white, grey, dark grey, orange, and red. The color of the WPC corresponds to the RAL Classic catalogue.



"Pearl" for decoration

Layer XXL
750 x 750 x 600 mm
Art: 2053203



Ball XL
500 x 500 x 400 mm
Art: 2053202



Layer L
350 x 350 x 200 mm
Art: 2053201



Bollard



Bollard Dual
300 x 330 x 600 mm
Weight: 62 kg
Art: 10402



Bollard Pearl
400 x 450 mm
Weight: 60 kg
Art: 10408



Materials

Base - composite marble. Flooring - wood-polymer composite. Coated with a protective layer.

Method of attachment

Installed on a prepared foundation

Materials

Base - composite marble. Flooring - wood-polymer composite. Coated with a protective layer.

Method of attachment

Installed on a prepared foundation

Aesthetic solutions

The base colors include white, grey, dark grey, orange, and red. The color of the WPC corresponds to the RAL Classic catalogue.



Bike Rack



Materials

Base - composite marble. Flooring - wood-polymer composite. Coated with a protective layer.

Method of attachment

Installed on a prepared foundation

Aesthetic solutions

The base colors include white, grey, dark grey, orange, and red. The color of the WPC corresponds to the RAL Classic catalogue.



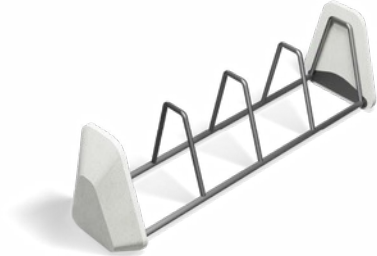
Bike Rack



Bike Rack Organ
5,500 x 500 x 930 mm
Weight: 52.5 kg
Art: 204790203



Bike Rack Yellow
3,500 x 500 x 930 mm
Weight: 52.5 kg
Art: 204790205



Bike Rack Gray
2300 x 640 x 700 mm
Weight: 180 kg
Art: 2047901



Bike Rack Orang
1,500 x 500 x 930 mm
Weight: 52.5 kg
Art: 204790202



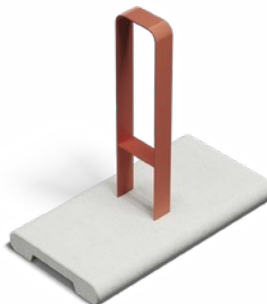
Bike Rack Gray
6,500 x 500 x 930 mm
Weight: 52.5 kg
Art: 204790204



Bike Rack Yellow
7,500 x 500 x 930 mm
Weight: 52.5 kg
Art: 204790201



Bike Rack Gray
8,900 x 480 x 930 mm
Weight: 75 kg
Art: 204790206



Bike Rack Red
9,900 x 480 x 930 mm
Weight: 75 kg
Art: 204790207



Bike Rack Yellow
10 900 x 480 x 930 mm
Weight: 75 kg
Art: 204790208



Materials

Base - composite marble. Flooring - wood-polymer composite. Coated with a protective layer.

Method of attachment

Installed on a prepared foundation

Aesthetic solutions

The base colors include white, grey, dark grey, orange, and red. The color of the WPC corresponds to the RAL Classic catalogue.



Water fountains



Fountain Asia
600 x 250 x 1200 mm
Weight: 200 kg
Art: 10507



Fountain Poly
800 x 430 x 1100 mm
Weight: 232 kg
Art: 10503



Tulip Fountain
500 x 500 x 1000 mm
Weight: 112 kg
Art: 20048



Fountain Qurt
360 x 480 x 800 mm
Art: 20324



© All rights reserved.

Materials

The base is composite-marble stone.
The flooring is a wood-polymer composite.
Covered with a protective layer.

Mounting method

It is installed on a
pre-prepared base

Decorative solutions

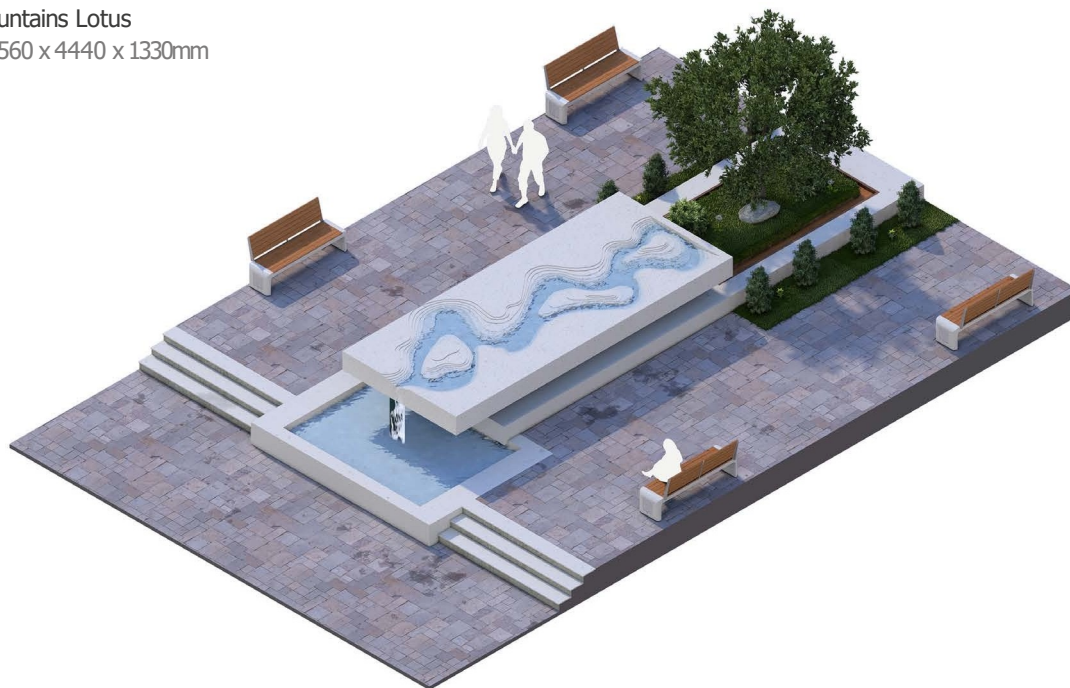
The base color is white, gray, dark gray,
orange and red. WPC color according
to the RAL Classic catalog.



Fountains

Fountains Lotus

13560 x 4440 x 1330mm



Materials

Base - composite marble. Flooring - wood-polymer composite. Coated with a protective layer.

Method of attachment

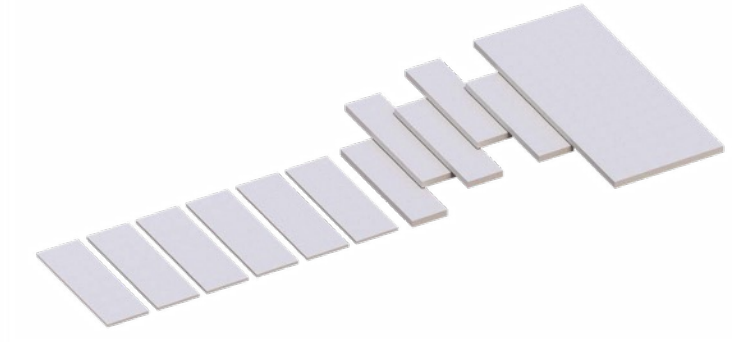
Installed on a pre-prepared foundation

Aesthetic solutions

The base colors are white, grey, dark grey, orange, and red. The color of the WPC corresponds to the RAL Classic catalogue.



Stairs



Materials

Base - composite marble. Flooring - wood-polymer composite. Coated with a protective layer.

Method of attachment

Installed on a pre-prepared foundation

Aesthetic solutions

The base colors are white, grey, dark grey, orange, and red. The color of the WPC corresponds to the RAL Classic catalogue.



Concept of spatial organization



Materials

Base - composite marble. Flooring - wood-polymer composite. Coated with a protective layer.

Method of attachment

Installed on a prepared foundation

Aesthetic solutions

The base colors include white, grey, dark grey, orange, and red. The color of the WPC corresponds to the RAL Classic catalogue.



Tennis Table



© All rights reserved.

Table Tennis

Materials

Base - composite marble. Flooring - wood-polymer composite. Coated with a protective layer.

Method of attachment

Installed on a prepared foundation

Aesthetic solutions

The base colors include white, grey, dark grey, orange, and red. The color of the WPC corresponds to the RAL Classic catalogue.



Architectural approach for the urban landscape

A harmonious blend of aesthetics and functionality in a single element.

Regarding the collection

The sophisticated structure, characterized by its minimalist design, integrates seamlessly into the landscape, highlighting the contemporary aesthetic of the environment. Premium materials guarantee longevity, while the intentional geometry fosters a distinctive ambiance of warmth and comfort.



Materials

Base - composite marble stone. Flooring - wood-polymer composite. Encased in a protective layer.

Method of attachment

Installed on a prepared foundation

Aesthetic solutions

The base colors include white, grey, dark grey, orange, and red. The color of the WPC corresponds to the RAL Classic catalogue.



The notion of public space

Stella

Regarding the collection

The stella serves as an iconic feature of public spaces, shaping their identity and providing a visual focal point. Its minimalist design and robust materials guarantee longevity, while the graceful form integrates seamlessly into the urban landscape.



The notion of public space

Materials

Base - composite marble. Flooring - wood-polymer composite. Coated with a protective layer.

Method of attachment

Installed on a prepared foundation

Aesthetic solutions

The base colors are white, grey, dark grey, orange, and red. The color of the WPC corresponds to the RAL Classic catalogue.



Architectural integration within the urban landscape

Aesthetic and functional aspects of supporting structures

Regarding the collection

An innovative architectural solution that harmoniously integrates structural support with an aesthetically pleasing spatial design. The organic contours of the columns evoke a sense of lightness, effectively enhancing the perception of space. The incorporation of robust materials guarantees longevity and resilience against external factors.



Materials

Base - composite marble stone. Flooring - wood-polymer composite. Encased in a protective layer.

Method of attachment

Installed on a prepared foundation

Aesthetic solutions

The base colors include white, grey, dark grey, orange, and red. The color of the WPC corresponds to the RAL Classic catalogue.



THANK YOU

Archilife

Contact Us

Tel: +966 531 975750 +966 503 544515
Email : info@naturallife.com.sa
Main Office : Prince Mohammed Bin Salman Rd, Hatim Desi



Archilife